



**10 CENTS
A MEAL**
FOR SCHOOL KIDS & FARMS



“We are still seeing a huge increase in student consumption.”—Beth Kavanaugh, Food Service Director, Public Schools of Petoskey.
Photo credit: Khalid Ibrahim, courtesy of MSU Center for Regional Food Systems

**PROSPERITY
REGION
2**

18 districts **9** counties **10** county region

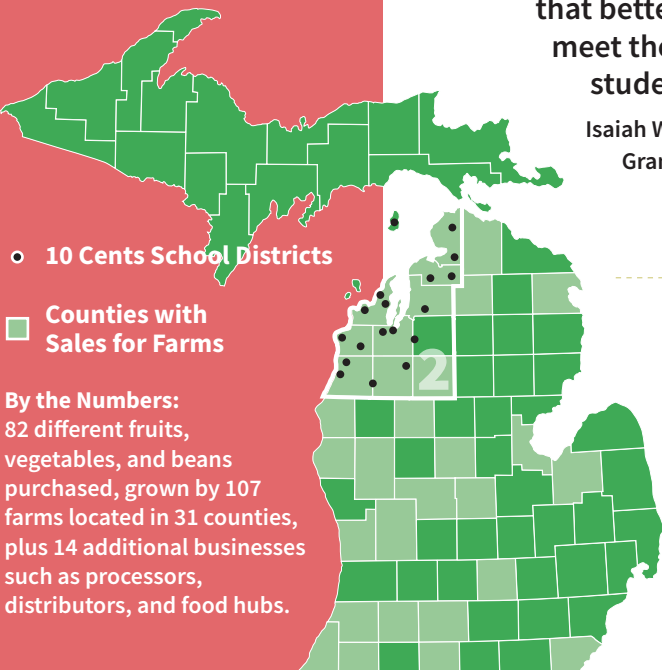
**Students
Served
22,496**

18 DISTRICTS Bear Lake Schools, Beaver Island Community School, Benzie County Central Schools, Boyne Falls Public School District, East Jordan Public Schools, Forest Area Community Schools, Frankfort-Elberta Area Schools, Glen Lake Community Schools, Grand Traverse Area Catholic Schools, Kaleva Norman Dickson School District, Leland Public School District, Mancelona Public Schools, Manton Consolidated Schools, Onekama Consolidated Schools, Pellston Public Schools, Public Schools of Petoskey, Suttons Bay Public Schools, and Traverse City Area Public Schools

9 COUNTIES Antrim, Benzie, Charlevoix, Emmet, Grand Traverse, Kalkaska, Leelanau, Manistee, Wexford

“We talk a lot about educating the whole child, and we see the benefits--we see it every day in the numbers of kids that eat lunch when we are making these kinds of offerings versus the old way. The scratch cooking and farm to table makes such a difference in the morale of our kids and our staff.”

Sander Scott, Superintendent
Glen Lake Community Schools



10 Cents School Districts

Counties with Sales for Farms

By the Numbers:
82 different fruits, vegetables, and beans purchased, grown by 107 farms located in 31 counties, plus 14 additional businesses such as processors, distributors, and food hubs.

“The 10 Cents a Meal program has allowed Wunsch Farms to experiment with crops and farming and handling methods that better enable our farm to meet the needs of Michigan students and schools.

Isaiah Wunsch, Wunsch Farms
Grand Traverse County

Students are taking more fresh apples this school year and more importantly they aren't throwing them away once they leave the register! The switch to all local apples (which taste better!) have made a huge difference.

Jessica Moody, Food Service Director
Mancelona Public Schools

Compared to last year we have upped our game as far as Michigan products I'm using on a daily basis. The radishes we are able to get--the green, watermelon, and daikon radishes--it provides awesome color to the salad bar in the winter.

Melissa Lyons, Head Cook
East Jordan Public Schools



PROSPERITY REGION 2

“It’s great to have another source of income. The more diverse streams of income we have the more stable we are as a farm.”

Andrea Romeyn,
Providence Farm, Antrim County

“The students can’t stop raving about the wonderful different varieties of apples and plums they are eating. This is my second year of the pilot, and it is only getting better.”

Tim Klenow, Food Service Director
Kaleva Norman Dickson School District, Bear Lake Schools, and Onekama Consolidated Schools

“Having another source for lettuce really helped during the Romaine crisis. The local greens are more expensive in the off season, but it is worth it in flavor, supporting our local economy, and longer shelf life.”

Jenna Noffsinger,
Food Service Director
Frankfort-Elberta Area Public Schools

Serving New Foods to Students

55

Total new foods tried because of 10 Cents a Meal

33 New Michigan-grown vegetables tried for the first time.



Top new Michigan-grown vegetables on the menu: Broccoli, kale, cherry tomatoes, grape tomatoes, carrots.

16 New Michigan-grown fruits tried for the first time.



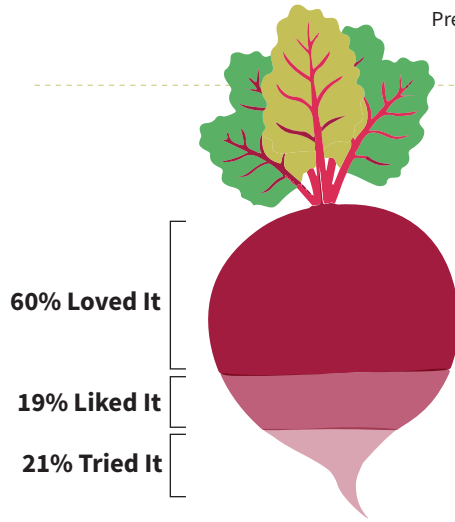
Top new Michigan-grown fruits on the menu: Apples, blueberries, watermelon.

6 New Michigan-grown beans tried for the first time.



Top new Michigan-grown beans on the menu: Black beans, red kidney beans.

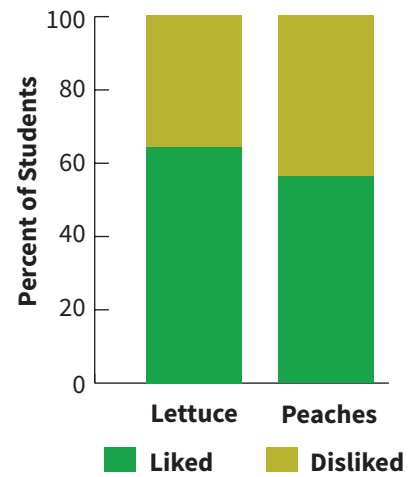
Preliminary survey results of food service directors, through December of the 2018-2019 school year, MSU Center for Regional Food Systems



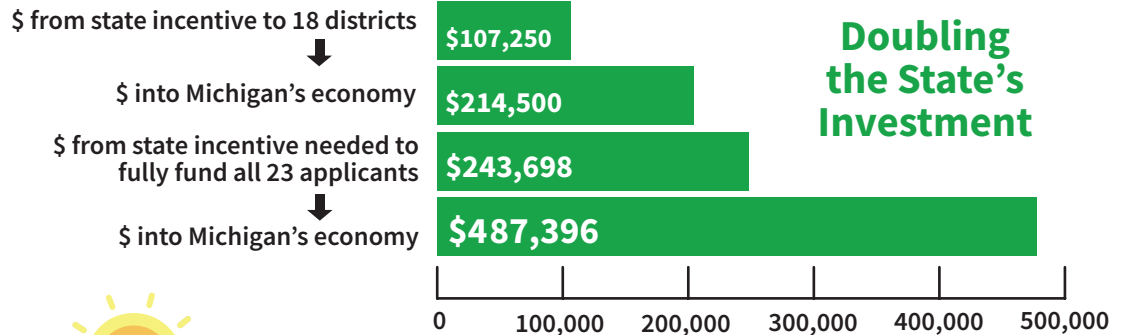
Fun Taste Test Beet Hummus

Aggregated data from Traverse City Area Public Schools, Frankfort-Elberta Area Public Schools, Suttons Bay Public Schools, Public Schools of Petoskey and *Pellston Public Schools. Source: School districts, FoodCorps AmeriCorps service members/Service Sites (MSU Extension and Groundwork Center), and Traverse Bay Area Intermediate School District. *plain hummus

Tasting Surveys



Classroom Surveys on Foods Selected at Lunch-Public Schools of Petoskey. Source: MSU Center for Regional Food Systems



Ideas in Action

Traverse City Area Public Schools partnered with the Grand Traverse Band of Ottawa and Chippewa Indians to create a Three Sisters Garden of beans, corn, and squash.

Traverse Bay Area Intermediate School District hired a farm to school coordinator and AmeriCorps service members to assist Prosperity Region 2 schools with activities and easy-to-adopt curriculum resources.

Leland Public Schools features locally grown foods in a Community Back to School Dinner, putting farm to school efforts front and center in the community.