

Manistee County-Wide Park & Recreation Plan Update

Worksheet for Local Stakeholders

Instructions

Thank you for helping in this important effort to update the Manistee County-Wide Park & Recreation Plan. This worksheet and the subsequent discussion with Networks Northwest regarding the responses to each section will help to ensure that the county-wide plan accurately describes the direction the community is seeking to go.

Please read each section's directions, review the information provided and detail updates that will go into the 2022-2026 plan. This worksheet should be completed by either an individual or group that is very knowledgeable about parks and recreation in your municipality.

Norman Township

Item 1 - DNR-Funded Projects

Below is a list of projects from the 2016-2020 county-wide plan that the Michigan Department of Natural Resources has funded. The DNR requires all parks and recreation plans to list projects that it has funded. Please review the table and provide any and all updates or additional projects that have taken place since 2016.

Project #	Applicant	Title	Year	Amount	Status	Description
26-01023B1	Norman Township	Norman Twp. Park	1977	\$9,250.00	Closed	Development of two tennis courts.

Item 2 - Community Description

This community description was provided by a local official from your municipality during the previous park and recreation planning process. Please look over this description and make sure that it accurately answers the following questions:

- What is your community known for, both internally (to residents) and externally (to visitors)?
- What in your community are residents most proud of?

- What recreation opportunities are present in your community? (please mention parks, trails, water access, camping, etc.) – you do not need to note every recreation site in your municipality. A table will note each site in the final plan. Please provide a narrative that describes recreation generally in your community.

Description from previous plan:

Norman Township is rural and rich in natural beauty, with extensive natural resources including: national forestlands; hundreds of miles of inland lake, river and streams; diverse wildlife habitat; forested hills and open meadows and numerous wetlands. These natural resources contribute to a beautiful, mostly rural setting for people to live, work and recreate within the Township.

The Township's population for the year 2010 was 1,561, as reported by the U.S. Census Bureau. Norman Township experienced a 7.0% population decline over the past decade. Seasonal residents, visitors to private home and rental cottages and day tourists importantly add to the Township's population and economic base during the summer months.

There is no incorporated village or city within the jurisdictional boundaries of Norman Township, but the unincorporated village of Wellston may be considered the Township's population center. The corners of M-55 and Seaman Rd. is likely the busiest area within the Township. Although historically a larger settlement, land uses now at and in the vicinity of this area include a convenience store, auto repair shops, the Township Hall and Library and outdoor stores tailored to the areas fishing interests.

Norman Township rests in the heart of the Manistee National Forest, with abundant USFS lands throughout. The Pine River and the south arm of Tippy Pond extend into the Township offering water resources for various recreational activities.

The Pine River hosts two well known recreation sites in close proximity to one another. The Cooley Bridge State Roadside Park and the Low Bridge Canoe Landing are primary sites which the Township would like to see continued focus on improving amenities and promoting access.

The Township operates a public access on the south arm of Tippy Pond in the Norman Township Tippy Pond Boat Launch. This popular boat launch is located on Consumers Energy property which is managed by the Township through a cooperative agreement.

Norman Township has land trails in place which provide connections to neighboring Townships and extend into Lake County to the south. Support for increased trail connections and for the establishment of a loop backpacking trail system around the Pine River has emerged and should continue to be a focus for the Township.

Item 3 - Primary, Secondary & Tertiary Sites

In the 2016 park and recreation plan, local stakeholders worked with the planning team to categorize their recreation assets in terms of their importance to the community. These sites were designated primary, secondary or tertiary. Please review the list of sites shown below and confirm that these designations are correct or if one or more of these sites should be changed.

Primary

- Low Bridge Canoe Landing
- Cooley Bridge State Roadside Park
- Arboretum Trailhead

- Fishing Dock
- Nor. Twp Tippy Pond Boat Launch

Secondary

- Dorner Lake Recreation Area
- Sand Lake Recreation Area

Tertiary

- Pine Lake Recreation Area
- Crystal Lake Park
- Crystal Lake Beach
- Chittenden Classroom & Kitchen
- Norman Township Hall
- Wellston Elementary School
- Upper Man. River Rustic Campsite
- Moss Rd Access-MR
- Upper Man. River Rustic Campsite
- Upper Man. River Rustic Campsite

Item 4 - Recreation Site Amenities

Please review the attached table of recreation sites in your municipality. This table displays all of the amenities at each site. If amenities have been added or taken away at a particular site, please note this change for the eventual discussion your stakeholder group will have with Networks Northwest.

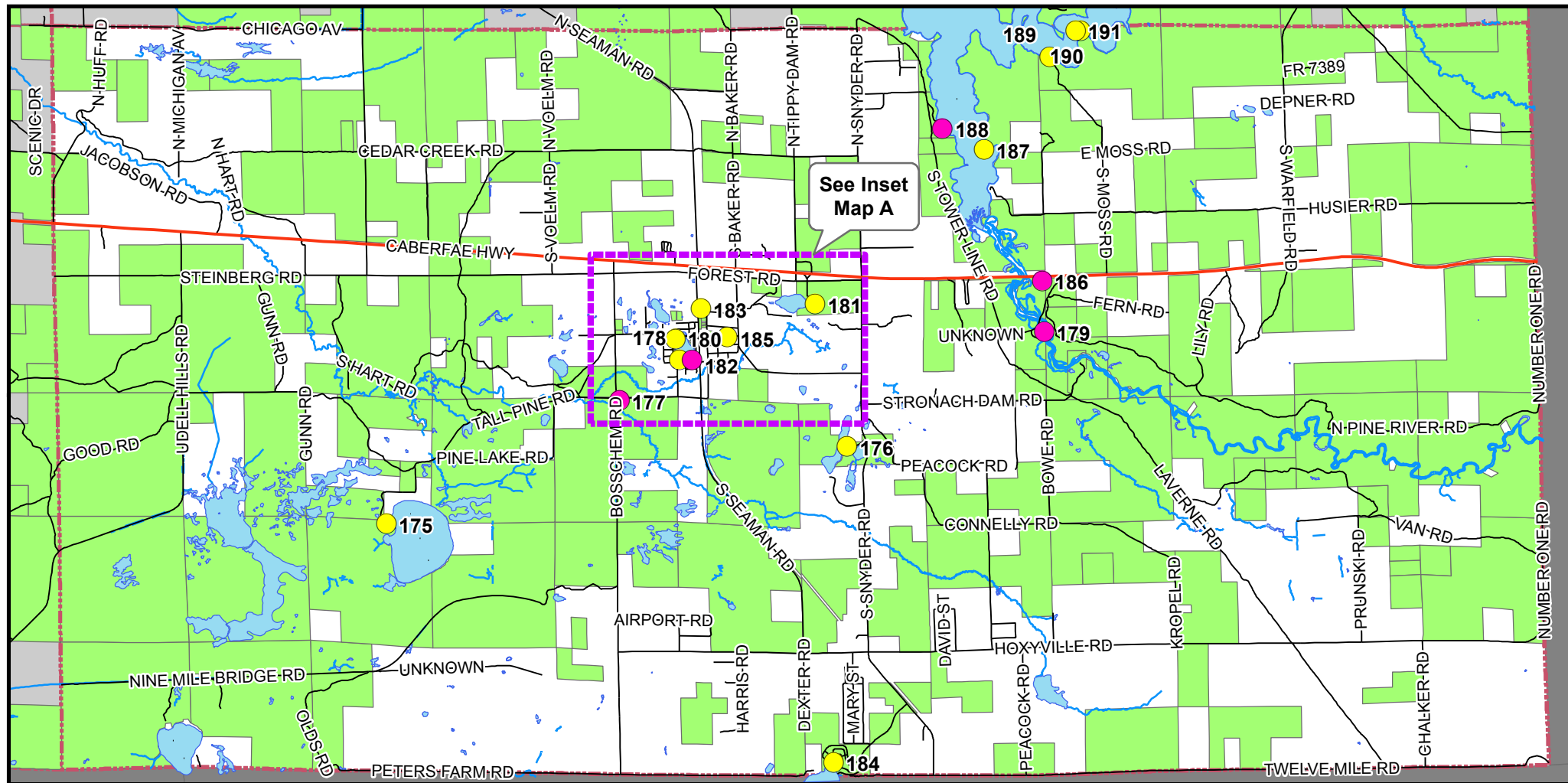
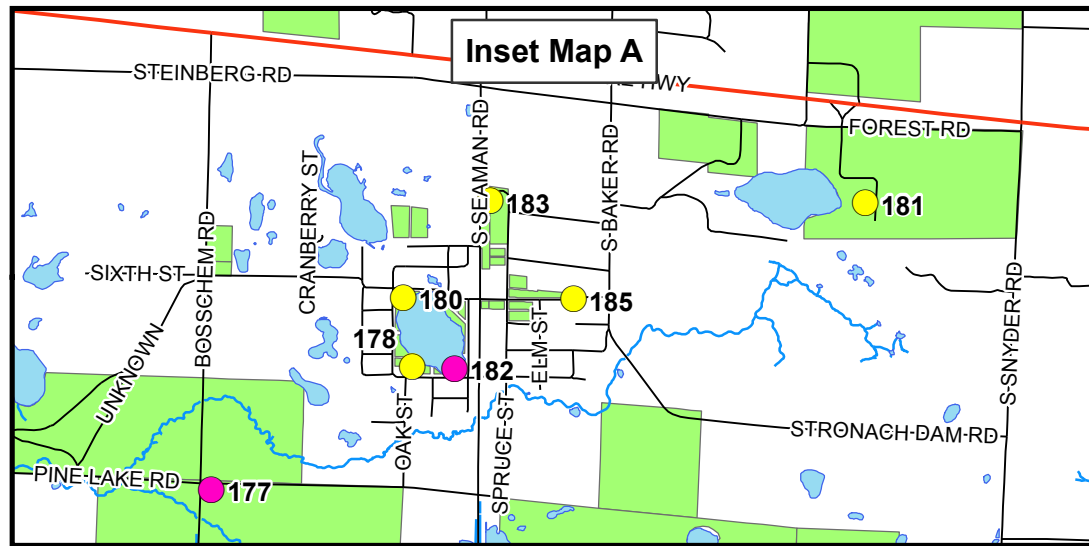
Recreation Site Map ID #	Site Name	Ownership	Municipality Priority Ranking	County-wide Primary																																	
				Park Type	Fee Site	ADA Access (Low, Mod., High)	Explore the Shore Nominee	Lighting	Dark Sky Candidate	Parking Availability	Signage Directional	Signage Educational	Camping	RV Compatible (Camping)	Potable Water	Restrooms (Flush Toilets)	Outhouse (Pit Vault)	Portable Toilet	Garbage Receptacle	Fire Pit	Picnic Table	Benches	Grill	Water Access	Beach	Pier/Fishing Platform	Canoe/Kayak Access	Boat Launch	Picnic Shelter	Trailhead (Water, Land)	Trails (Off Pavement)	Playground Equipment	Baseball Field	Volley Ball	Basketball Court		
179	Low Bridge Canoe Landing	USFS	1	•	RP	•	M	•		•	3	•	•				•	•	•				•				•				W	•					
186	Cooley Bridge State Roadside Park	State	1	•	SU		H			•	3	•	•				•	•	•				•														
177	Arboretum Trailhead	USFS	1		NRA		L			•	1																			L	•						
182	Fishing Dock	NOR	1		SU		L				2	•							•							•											
188	Nor. Twp Tippy Pond Boat Launch	Con	1		RP		L		•		3	•	•				•	•		•	•	•					•	•		W	•						
176	Dorner Lake Recreation Area	USFS	2		NRA		L				3	•	•											•			•	•									
184	Sand Lake Recreation Area	USFS	2		NRA	•	M				3	•	•	•	•		•	•	•	•	•		•	•		•	•				•						
175	Pine Lake Recreation Area	USFS	3		NRA	•	L				3	•	•	•	•		•	•	•	•	•		•	•		•	•				•						
178	Crystal Lake Park	NOR	3		NP		L		•		3	•					•		•	•		•	•		•	•						•			•	•	
180	Crystal Lake Beach	NOR	3		SU		L		•		3	•					•	•		•	•		•	•		•	•						•				
181	Chittenden Classroom & Kitchen	USFS	3		SU		M		•		3	•	•					•																			
183	Norman Township Hall	NOR	3		SU		M		•		3	•					•	•																			
185	Wellston Elementary School	School	3		NP		L				3	•						•		•			•										•	•		•	
187	Upper Man. River Rustic Campsite	USFS	3		SU		L			•	0	•		•							•			•								•					
189	Moss Rd Access-MR	MCRC	3		RDSU		L			•	1													•													
190	Upper Man. River Rustic Campsite	USFS	3		SU		L			•	0	•		•							•			•								•					
191	Upper Man. River Rustic Campsite	USFS	3		SU		L			•	0	•		•							•			•								•					

Legend

- Rec Sites
- Primary Site
- Highways
- Roads
- Hydrology
- Water Bodies
- Manistee County Public Lands
- Norman Township
- City/Village Boundaries
- Neighboring Townships
- Neighboring Counties



Inset Map A



Manistee County-Wide Park & Recreation Plan Update

Administrative Structure – Norman Township

The Michigan Department of Natural Resources (DNR) requires park and recreation plans to describe the administrative structure of the jurisdiction submitting a plan to be on file with the state. The following language is directly from the DNR’s Guidelines for the Development of Community Parks and Recreation Plans:

“Planning for and providing park and recreation services and open space for a community requires staff (or volunteers) and funds to purchase recreation land and open spaces and to develop, operate, and maintain them. In this section, describe how the park and recreation functions are carried out in your community, and include descriptions of the following as they apply to your community:

- The park and recreation commission, committee, board of directors, or advisory board. Include the enabling act under which it was established (see Appendix A). For multi-jurisdictional plans, the working relationship among the participating communities and school districts.
- Your parks and recreation department, staff, or authority. Define who has the authority to commit funds for parks and recreation, accept grants and purchase land on behalf of the community.
- The current year and projected annual budgets for parks operation and maintenance, recreation programming, and capital improvements.
- The sources of funding for the park and recreation budget.
- The volunteers involved in park and recreation programs and what they do. Describe any partnerships you have formed with private organizations to maintain or operate any of your park or recreation programs.
- Relationships with school districts and other public agencies involved in recreation.
- For regional authorities, describe the relationship between the authority and the recreation departments of the participating communities. Provide the Articles of Incorporation for the authority.”

On the next page is a table with two rows of information. The first row shows the information for your jurisdiction as it appeared in the 2016-2020 county-wide plan. The second row is for you to fill in.

[illegible]

Manistee County-Wide Park & Recreation Plan Update

Worksheet for Local Stakeholders

Instructions

Thank you for helping in this important effort to update the Manistee County-Wide Park & Recreation Plan.

Norman Township

Goals & Objectives

Prior to your community's discussion with Networks Northwest, please review the goals and projects from the previous plan. Please note any projects that have been completed or are no longer sought by the municipality. Also make note of any projects that members of the public are seeking to implement in the next 5-10 years (please note that any goals and projects listed in the draft plan will be reviewed during a public hearing at the end of the planning process).

1. Goal: Increase awareness about natural resource and recreational opportunities

PROJECTS:

Visitors Bureau Meeting:

- Meet with Visitors Bureau to further educate them about the Township recreational opportunities

2. Goal: Support work for establishment of trail connections to neighboring communities

PROJECTS:

County-Wide Trail System:

- Continue to work collaboratively to develop a County wide trail system

Trail Leadership Team:

- Continue to support and have a representative serve on a trail planning and implementation team

3. Goal: Park improvements

PROJECTS:

Site #188 Norman Township Tippy Pond Boat Launch:

- Support development of a universally accessible fishing platform.

4. Goal: Rustic trails and blueways

PROJECTS:

Pine River Pathway:

- Encourage and support development of a back-country loop trail with campsites on USFS lands around the Pine River.

Pine River Blueway:

- Further promote the beauty of the Pine River as a blueway trail.

No-Trace Education:

- Support education efforts for “leave no-trace” practices for visitors and residents.