

5/19/22 ZOOM Joint Meeting with Manistee County LEPC/LPT and LRBOI Tribe

Participants:

- Mike Machen, Manistee County EM /911-Director
- Jeff Dontz, Manistee County Board of Commissioners
- Joe Coleman, Administrator for Manistee County Medical Care Facility
- Pat Bak, National Weather Service – Gaylord, Warning Coordination Meteorologist
- Andy Bradford, TES Filer City Station Maintenance Supervisor
- Samantha VanAelst, Reith-Riley, Interstate Asphalt
- Megan Powers, American Red Cross
- Lt. Michael deCastro, Michigan State Police
- Brad Lasko, Manistee County Road Commission Maintenance Supervisor
- Brandy Martin, LRBOI Tribal Emergency Response Team
- Robert Robles, LRBOI Tribal Police
- Gary Lewis, LRBOI Utility Department
- Steve Parsons, LRBOI Planning Coordinator
- Gary Paul DiPiazza, LRBOI Tribal Councilor

Presenters:

- Jennifer Neal, AICP, Networks Northwest Community Planner
- Stephanie Loria, Networks Northwest Community Planner

Participants were asked to indicate their top natural hazard concerns in the chat box:

Top Natural Hazard Event	# of Responses
Winter Storms	4
Dam Failure	3
Excessive Rainfall/Flooding	2
Severe Thunderstorms	2
Coastal Erosion	1
Invasive Species/Wildlife Diseases	1

Severe Thunderstorm/Wind Storm Group Discussion

- Steve Parsons, LRBOI: Severe thunderstorms appear quickly and people are unaware of what is coming. They usually results in no severe damage or injury to people; mostly result in downed trees; damaged homes, yards and buildings. They need a better system to warn people other than relying on TV/Radio announcements. There is the potential for people to become severely injured and they need a better way to forewarn people of severe storms. Also, once the storm comes through, their tribal community needs a better mechanism to access resources for recovery and cleanup. They have the sense that there is no “fallback” mechanism to rely on for this.
- Brandy Martin, LRBOI: the LRBOI sends severe weather notifications out only to their employees, but not to tribal members because they are so geographically spread out. So tribal members have to rely on news sources for weather alerts.
- Gary Lewis, LRBOI: his concern from the utility management side is power outages from thunderstorms. They have some backup generators at certain utility locations. But they have had to deal with lightning strikes on some of their utility system’s electrical components; have had repair and put surge protectors on certain ones.

Severe Winter Weather Group Discussion

- Joe Coleman, Manistee Medical Care Facility: anything like a once-in-a-decade major winter storm would affect the ability of staff to drive to their jobs at the facility. Results in staffing issues if roads are not cleared.
- Brandy Martin, LRBOI: They have a heat/cooling center available for residents downhill from the Aqi housing complex, but they would need protocols/facilities/equipment to also deal with power outages for residents.
- Jeff Dontz – power outages often occur in areas where the lines are aging and/or tree trimming along the lines has been neglected. There are several areas in Manistee Twp. like this.
- The definition of winter storm events seems to have changed over the years. For example, the blizzards of the late 1970's/early 1980's seem to be a rarity nowadays. It appears that the media, particularly social media, report most weather events as severe even if they are not. Social media has diluted the definitions provided by the NWS. But, perhaps this is a result of the news media wanting to make sure people are well prepared for any scenario.
- Megan Powers – the American Red Cross (ARC) receives residential calls for assistance in severe weather events. They do provide assistance for anyone who needs power to run medical devices in their home. She has noticed that many people are buying perishable goods instead of canned goods in grocery stores, and when the power goes out, they lose most of their food supply. The ARC does provide informational brochures, etc. on how to prepare emergency kits with the appropriate supplies. However, during an ice storm, they cannot respond/travel to help people until the roads are cleared.
- Pat Bak – The NWS has specific criteria for defining each type of severe weather event. For example, a blizzard is defined by winds over 35 mph, and blowing and drifting snow lasting for at least 3 hours. A blizzard is not the same as a heavy snowstorm. The NWS emails out to county/local agencies, EMS/1st responders, etc. alerts for severe weather. Also, even though it is considered a low tech option, the NOAA Weather Radios can be quite effective as a warning system. They are loud and can wake people up at night with a warning.

Extreme Heat and Drought – no discussion

Vulnerable Populations Group Discussion

- Some local residential renters have to move out of rental homes in the summer, due to the demand for short-term rental properties in the summer. Those year-round renters are often living out of campers, on campsites, etc. during that time and therefore are more exposed to severe weather events.
- Those living, vacationing or recreating in the wilderness areas often have no nearby emergency services in a severe weather event.

Invasive Species Group Discussion

- Gary Paul DiPiazza, LRBOI – he serves on the tribe's Natural Resource Commission. They have concerns about diseases with the deer population, zebra/quagga mussels, round goby, Asian carp (when they arrive) and the Autumn olive shrub (they have tried pulling some of it). Their tribe values hunting & gathering activities and many invasive species would negatively impact this.

Pandemic Group Discussion

- The County's 911 Center received fewer calls during the pandemic and their workload actually went down because of this. People did not want to go to the hospital due to fears of COVID exposure. The calls they did get were often of true emergency situations where someone was very sick or injured and needed immediate medical care.
- The 911 Dispatch crew had to change the questions they asked when taking a call in order to obtain and relay information about COVID symptoms/exposure before lending in the first responder team.
- The EMS staff was down due to COVID exposures, quarantine timing guidelines and less interest in the workforce for this sector.
- It was difficult/frustrating to relay the constantly changing COVID procedures and guidelines provided by the State of Michigan. The guidelines seemed to be more politically driven than science-based. Also, the procedures did not account for the different types of impact on rural areas vs. urban areas.
- Some of the rules/guidelines seemed to be extreme and not based on scientific evidence. For example, having to fire health care workers who did not get vaccinated. Then they found out that workers who did get vaccinated still got COVID and could spread it. The effects on fewer staff available in the health industry and just about every other industry have not lessened and we are still not at recovered employment levels.
- The overall message of what to do to be safe (quarantine guidelines) could have been changed based on new scientific evidence.
- Vaccination clinics provided by the local Health Department were very efficient and went well. They efficiently completed vaccinations for the County Medical Care Facility after their original arrangement for vaccinations with commercial pharmacies fell through.

Mapping Exercise/Discussion: Coastal Hazards, Inland Flooding, and Wildfire

Coastal Hazards

- In 2019, before the pandemic, coastal erosion/flooding issues was the primary concern in Manistee County. On a positive note, EGLE has streamlined the process for shoreline permits in high risk erosion areas.
- FEMA Flood Zone Map changes – an issue to get the flood zone designation changed or removed on a property title when transferring ownership.
- The entire Lake MI coastline has erosion/flooding issues, particularly around Portage Lake/Portage Point/Manistee Lake.
- Sheriff's Dept. took photos of the entire coastline during high lake levels.
- When heavy rainfall events occur, there is often a sewage overflow in the City of Manistee. There is a corrective action being completed now.
- The Manistee River channel experiences a lot of damage to boat docks, launches, and the Riverwalk during high lake levels combined with a seiche event (2018 or 2019?)
- Some people with flood insurance were not covered during coastal erosion events because the event was categorized as erosion, not flooding.

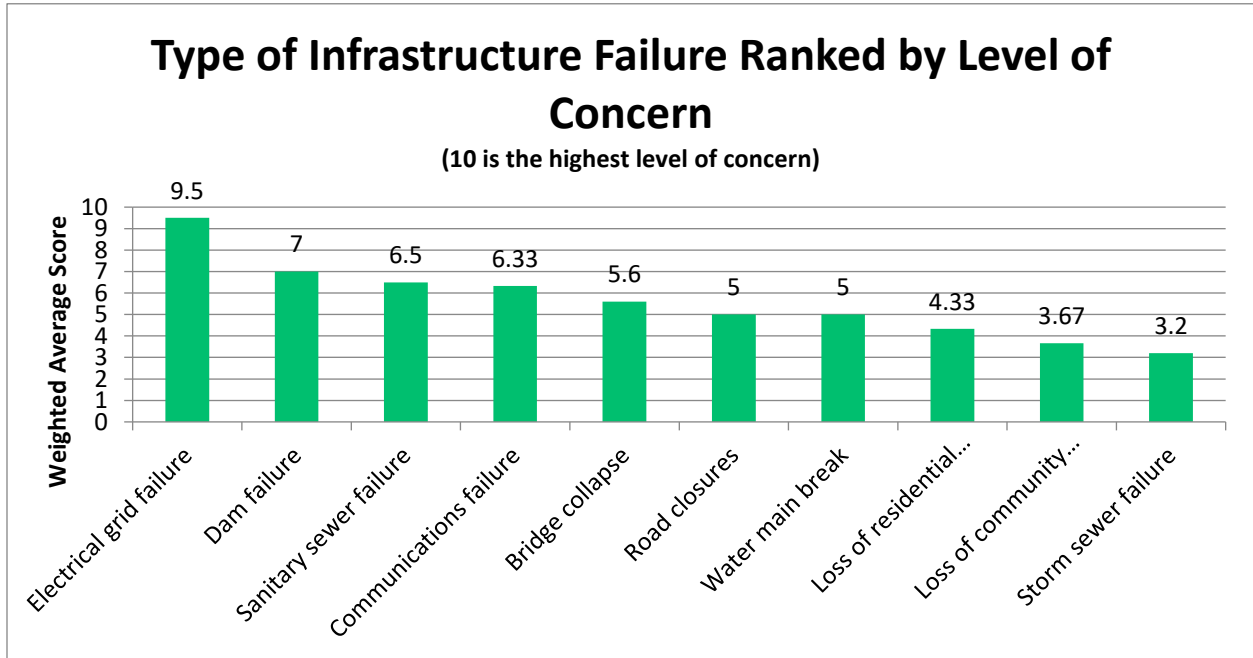
Inland Flooding – no discussion.

Wildfire

- The area in the community of Dublin (100-150 people) in the southeast area of the county (Norman Twp.) experienced a wildfire in 2021 that burned about 1,000 acres. There is a concern with one neighborhood in particular where James Street is the only access in and out. The area is surrounded by forest which tends to be very dry. The Norman Fire Chief held a community meeting in Dublin

sometime in March or April of 2022 to provide information on fire prevention in the neighborhood. They distributed information on CODE RED; will start to do neighborhood cleanups to get rid of brush... The Fire Chief said it was a good turnout.

- This year the USFS has been active in working on fire mitigation plans in the county; Mike Machen has heard from Ben Wagner, Manistee Zone Fire Officer.



Survey respondents (5 out of 6) respondents:

- Manistee County Emergency Mgmt.
- Manistee and Onekama Twp.
- Manistee County
- Manistee Township
- LRBOI

Zoom Meeting Chat Box 05/19/22

11:06:31 From Andy Bradford to Everyone:
Andy Bradford

11:06:39 From Brandy Martin to Everyone: Brandy Martin LRBOI

11:07:02 From Lt. deCattro to Everyone:
Lt. Michael deCastro. Yes I'm federally funded.

11:07:09 From Gary Lewis to Everyone:
Gary Leiw, LBOI, Utility Dept. not Federally funded

11:07:10 From Andy Bradford to Everyone:
Andy Bradford TES Filer City Station Maintenance Supervisor, not Federally funded

11:07:12 From Manistee County Road Commission - Brad Lakso to Everyone:
brad

11:07:13 From Gary Paul DiPiazza to Everyone:
Gary Paul DiPiazza LRBOI Tribal Councilor

11:07:15 From Joe Coleman to Everyone:
Joe Coleman, Administrator, Manistee County Medical Care Facility My position is not federally funded.

11:07:16 From Robert Robles to Everyone:
Sgt Robert Robles LRBOI Public Safety

11:07:18 From Jeffrey Dontz to Everyone:
Jeffrey Dontz
Not Federally funded
Manistee County Board of Commissioner's

11:07:29 From Pat Bak - NWS Gaylord to Everyone:
Pat Bak, Warning Coordination Meteorologist, National Weather Service, Gaylord. Federal employee

11:07:40 From Steve Parsons to Everyone:
Steve Parsons, Planning Coordinator, Little River Band of Ottawa Indians. My position is funded by tribal revenues and is not federally funded.

11:08:22 From Andy Bradford to Everyone:
Excessive Rainfall / flooding

11:08:25 From Brandy Martin to Everyone:
winter weather

11:08:27 From Mike Machen to Everyone:
Dam Failure

11:08:35 From Joe Coleman to Everyone:
Winter storm (staffing)

11:08:40 From Jeffrey Dontz to Everyone:
Coastal Erosion

11:08:50 From Manistee County Road Commission - Brad Lakso to Everyone:
Brad Lakso, Manistee County Road Commission

11:08:55 From Steve Parsons to Everyone:
Steve Parsons:: Severe Thunderstorms and Winter storms.

11:08:59 From Robert Robles to Everyone:
Dam failure

11:09:18 From Gary Lewis to Everyone:
Storm Damages, Dam Failure, Energy Resiliency

11:10:56 From Manistee County Road Commission - Brad Lakso to Everyone:
Winter weather, flooding affecting structures - roads and bridges

11:11:03 From Gary Paul DiPiazza to Everyone:
Invasive Species, Wildlife Diseases

11:36:33 From Samantha VanAelst to Everyone:
Samantha VanAelst Rieth-Riley, Interstate Asphalt

11:39:49 From Joe Coleman to Everyone:
It seems every storm has a name now.

11:42:04 From Pat Bak - NWS Gaylord to Everyone:
pat.bak@noaa.gov

11:43:57 From Pat Bak - NWS Gaylord to Everyone:
The National Weather Service does not name winter storms. That is the Weather Channel doing that and others have picked up on it. Tropical Storms/Hurricanes are named when a tropical weather system reaches a specified strength.

12:29:34 From Meghan Powers to Everyone: Meghan powers Red Cross

12:30:29 From Stephanie Loria_Networks NW to Everyone: <https://www.surveymonkey.com/r/MVKQ38M>