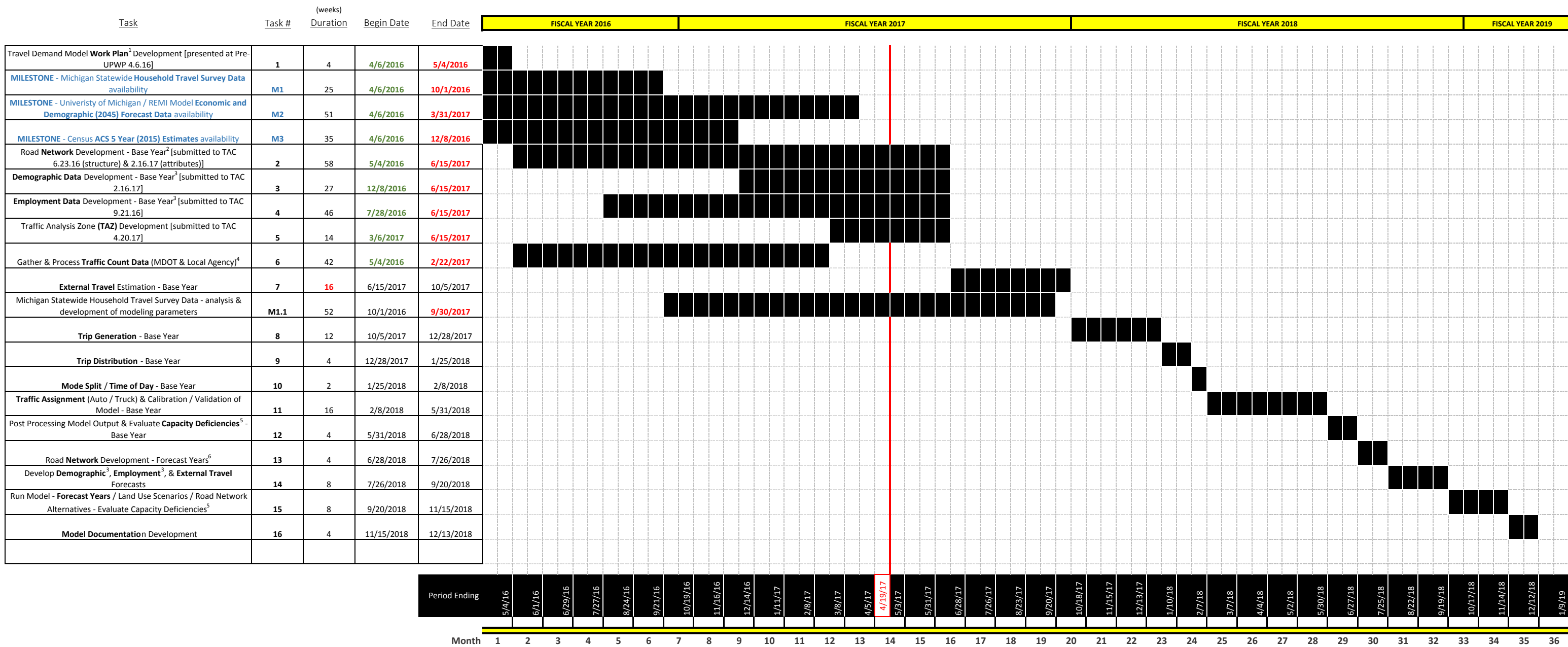


TDM Start Date:	4/6/2016
TDM End Date:	12/13/2018



¹ - MPO will need to establish the horizon year of the LRP (e.g. 2045), and a base year (e.g. 2015) for the travel demand model (aka "model"). MPO will need to agree to the SUTA-proposed model development schedule

² - MPO will need to review and concur with road network configuration to be represented in the model, as well as review and provide roadway attribution where requested by SUTA

³ - MPO will need to review and approve (through their Committees) the demographic and employment data to be utilized in the model

⁴ - MPO will need to coordinate with SUTA to obtain local agency traffic count data for model validation

⁵ - MPO and local agencies will need to review and concur with base year (and LRP horizon year) model outputs and capacity deficiencies

⁶ - MPO will need to provide SUTA with TIP and LRP Project List information