

Antrim County
Materials Management Planning Committee Minutes
April 24, 2025 at 2:00 PM
Antrim County Government Center
203 E. Cayuga St., Bellaire, MI 49615

MMPC Member Attendance			
Andre Grobaski, GFL <i>rep. of a solid waste disposal facility</i>	P	Bill Hefferan, Antrim County <i>elected official of the county</i>	E
Melissa Zelenak, Sunshine Recycling <i>rep. of a hauler</i>	P	Chris Weizenfapel, Milton Township <i>elected official of a township</i>	A
Mark Bevelhymer, GFL <i>rep. of a materials recovery facility (MRF)</i>	E	Michelle Fox, Village of Central Lake <i>elected official of a city or village</i>	P
Mark Tyslenko, Morgan Composting (represented by Brad Morgan, Morgan Composting Owner <i>rep. of a composting facility</i>	P	Austin Rowlander, Arrow Enterprises business rep. generating material	P
Vacancy <i>rep. of waste diversion, reuse, or reduction</i>	-	Janie McNabb, Networks Northwest <i>rep. of the regional planning area</i>	E
Lindsey Mason, ECT <i>rep. of an environmental interest group</i>	P	Attendance Key: P – Present A – Absent E - Excused Absence	
Others in Attendance: Terry Van Alstine (Antrim County), Mathew Cooke (DPA Representative), Tracy Tomaszewski (EGLE)			

I. Welcome and Introductions

Melissa Zelenak, Chair, called the meeting to order at 2:03 p.m. Members introduced themselves to members of the public and EGLE staff.

II. Public Comment

None.

III. Review Proposed Agenda

Mathew Cooke asked for the agenda to be revised to have bylaw and work program approval before the EGLE presentation.

Motion by Michelle Fox, supported by Andy Grobaski, to approve the April 24, 2025 MMPC agenda as amended. Motion carried unanimously.

IV. Approval of March 27, 2025 Meeting Minutes - Cancelled

It was noted that there were no minutes to approve as the March 27, 2025 meeting was cancelled for lack of quorum.

V. Bylaw Review, Discussion, and Consideration of Approval

Mathew Cooke noted that the revisions from the previous meeting to the bylaws included an updated financial conflict interest and per diem and mileage.

Motion by Austin Rowlander, supported by Andy Grobaski, to approve the Antrim County Materials Management Planning Committee Bylaws and send it to the Antrim County County Approval Agency for consideration of approval. Motion carried unanimously.

VI. Work Program Review, Discussion, and Consideration of Approval

Mathew Cooke noted that this work program is the same as presented at the last meeting. He noted there were a few revisions made including better call out of FY 25 tasks and adding the MMP Resource Webpage link. He asked members if there were any questions or revisions needed, and noted that following the meeting he will provide a memo to the Board of Commissioners.

Motion by Michelle Fox, supported by Austin Rowlander, to approve the Antrim County Materials Management Plan Work Program as presented and send to the Antrim County Approval Agency for consideration of approval. Motion carried unanimously.

VII. EGLE Presentation

Tracy Tomazsewski, EGLE Recycling Specialist, provided a Materials Management Planning presentation (attached).

VIII. MMP Discussion

Mathew Cooke noted that they have a request for proposals due on May 9, 2025 for technical assistance and support with MMP, specifically with calculating a solid waste rate and identifying tonnages and materials. He said that they are developing a draft survey for residents, local units of government, and business to get background information and build awareness. Lastly, he noted that they are looking at attending 3 or 4 community events to build MMP awareness and drive survey results.

Members discussed avenues to push out the survey including social media, local units of government, County newsletter, news organizations, etc. Mathew Cooke will look into the potential of providing a postcard mailer to all residences.

Finally Mathew Cooke mentioned that we are still looking to fill the committee seat for a representative of a waste diversion or reuse facility and a new Township official or representative. A few ideas of organizations and people were mentioned to reach out to.

IX. Committee Member Comments

Lindsey Mason mentioned that the International Compost Awareness Week is taking place May 4 through May 10th.

X. Public Comment

None.

XI. Adjourn

Motion by Michelle Fox, supported by Austin Rowlander, to adjourn the April 24, 2025 MMPC meeting at 3:45 pm. Motion carries unanimously.

DRAFT



MICHIGAN DEPARTMENT OF
ENVIRONMENT, GREAT LAKES, AND ENERGY

Antrim County

*Working Together with Michigan's
Evolving Approach to Materials
Management*

Updates to Part 115

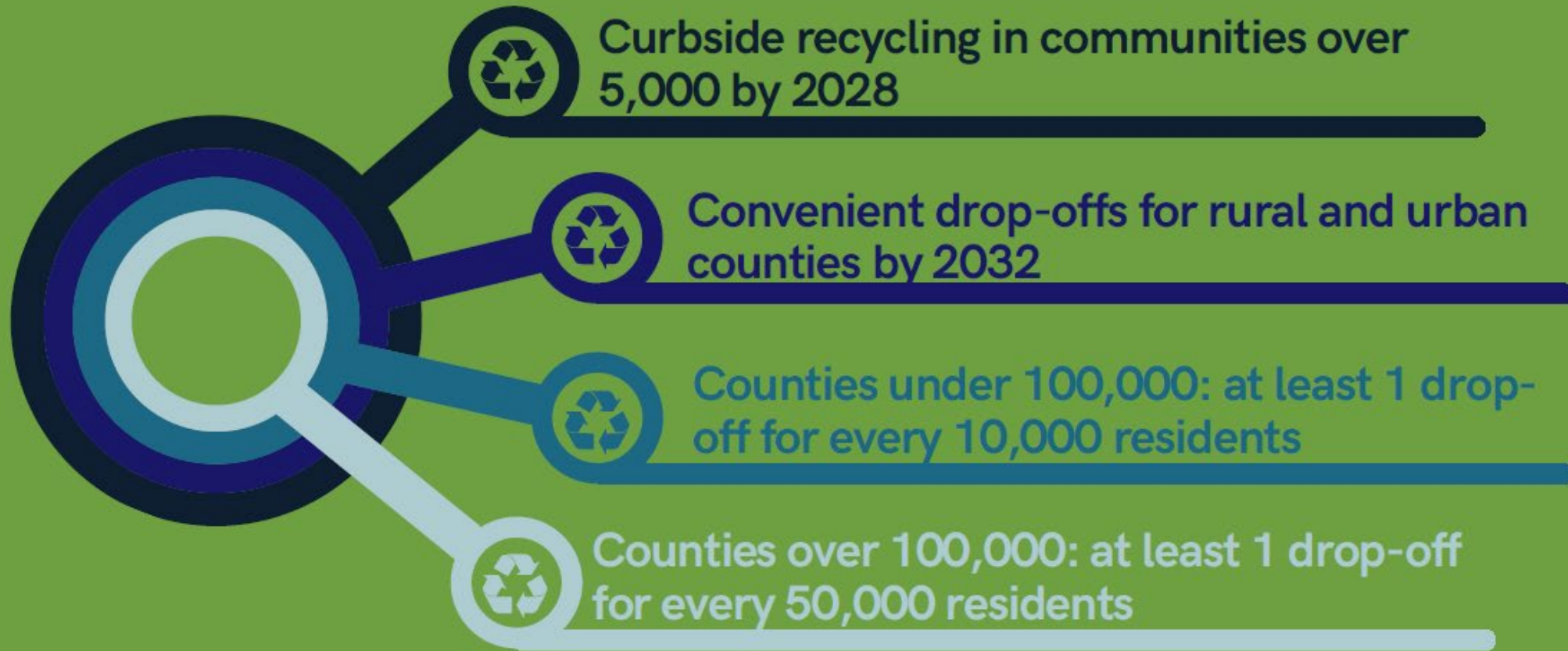
- ✓ Passed December 2022; Became effective March 29, 2023. Significantly changes the solid waste landscape in Michigan.
- ✓ Focus of planning has shifted towards materials management
 - Help to set/achieve priorities & the vision for each Planning Area
- ✓ The changes promote Material Management with the goals of:
 - Reducing the overall waste generated
 - Providing for innovative reuse of materials
 - Increased recycling, materials diversion and utilization
- ✓ Provides standards for recycling and composting facilities

WHAT: YOU NEED TO KNOW

- Focus of planning has shifted towards **materials management**
- Help to set/achieve **priorities & the vision** for each Planning Area
- Create needed **infrastructure** & programs for **utilization**
- Move Michigan forward toward **overall goals**
- All Counties have become the CAA
- MMPs starting to be developed soon



BENCHMARK RECYCLING STANDARDS



MMP Development

(Based on Notice of Intent (NOI) correspondences)

Multicounty MMPs Counties

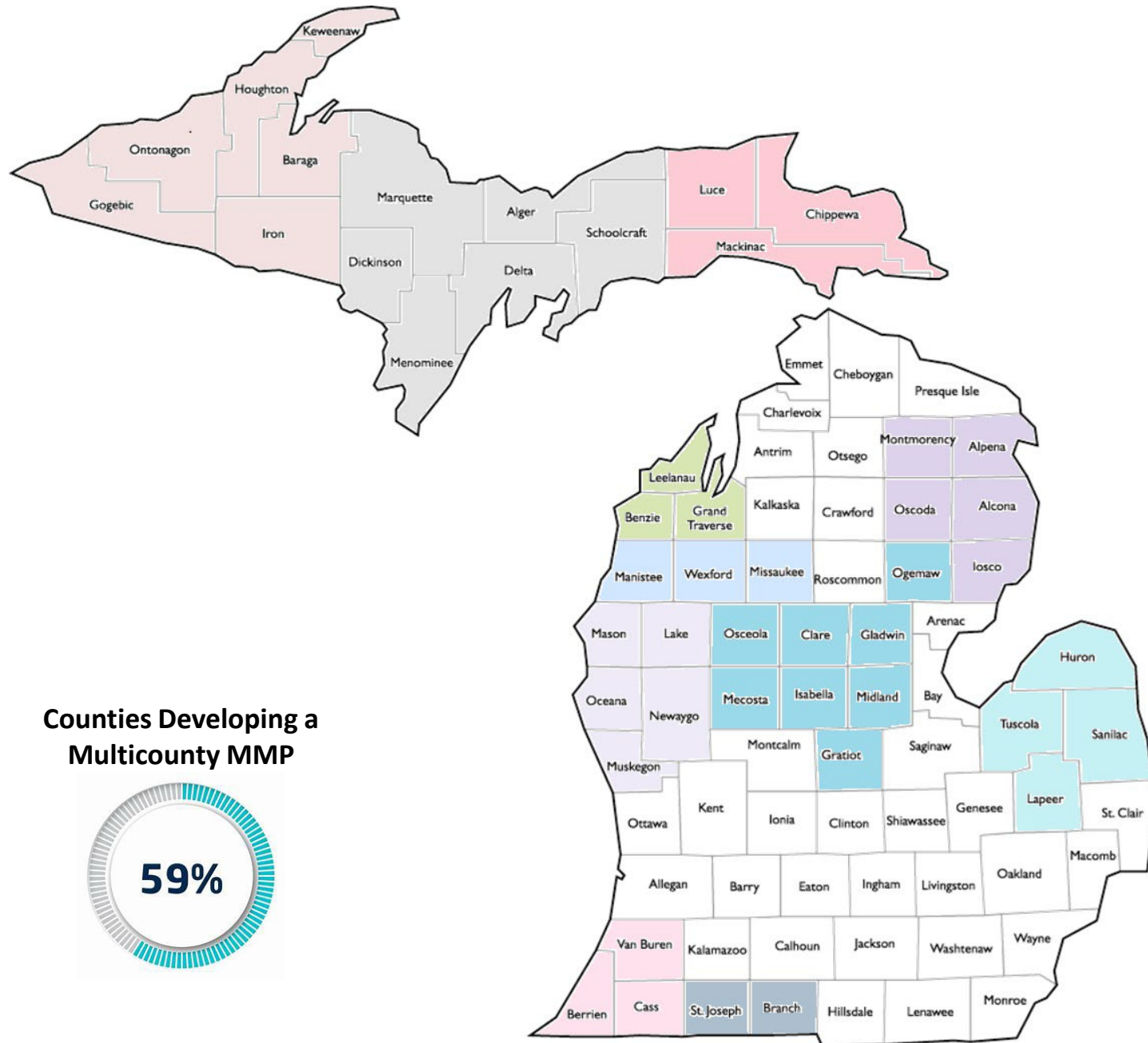
WUPPDR: Baraga, Gogebic, Houghton, Iron, Keweenaw, Ontonagon	CUPPAD: Alger, Delta, Dickinson, Marquette, Menominee, Schoolcraft
EUP: Chippewa, Luce, Mackinac	Benzie, Grand Traverse, Leelanau
Manistee, Missaukee, Wexford	WMSRDC: Lake, Mason, Muskegon, Newaygo, Oceana
Hartland: Clare, Gladwin, Gratiot, Isabella, Mecosta, Midland, Ogemaw, and Osceola.	Thumb Region: Huron, Lapeer, Sanilac, Tuscola
SWMPC: Berrien, Cass, Van Buren	Branch, St. Joseph
MOIAA: Alpena, Alcona, Iosco, Montmorency, Oscoda	

Counties in white are pursuing the MMP as a single county or have received an extension for its NOI submittal.

NOTE: The following counties have been accepted for a NOI extension: Clare, Gladwin, Gratiot, **Hillsdale**, Huron, Isabella, **Kalkaska**, Lapeer, Mecosta, Midland, Ogemaw, Osceola, Sanilac, Tuscola, and **Wayne**.

NOTE: Bolded counties equals single county.

Counties Developing a Multicounty MMP



Materials Management Planning Overview



WHAT: MMP COMPONENTS

MATERIALS MANAGEMENT PLAN

- ✓ Planning Area Profile
 - ✓ Population
 - ✓ Generation
 - ✓ Materials Management Infrastructure & Systems
 - ✓ Inventory of all facilities
 - ✓ Hauler Service Providers
 - ✓ Other Collection Events
 - ✓ MSW Recycling Rate
- ✓ Materials Management Goals
 - ✓ Diversion of Organics & Recyclables from Disposal
 - ✓ Benchmark Recycling Standards
 - ✓ Implementation Strategy
- ✓ Mechanisms
 - ✓ Funding and Enforcement
 - ✓ Responsible Parties
 - ✓ Siting Process
- ✓ Administration
 - ✓ Responsible Parties



[Website: Materials Management Plan Format](http://www.egle.michigan.gov)

ANNUAL MMP GRANTS & REGIONAL INCENTIVES

- Covers local costs for **preparing**, implementing, and maintaining MMPs
 - \$60,000 for each county
 - ~~\$10,000/county additional for multi-county planning~~
 - \$0.50 per capita, up to \$300,000,
 - Cover the higher upfront costs of initiating the new planning process (First 3 years only)
 - \$71,715.50/year for first 3 years



- **Contracts** for collections should include goals of the MMP
- Include/share **reporting** requirements
- **Share knowledge – work together**
- **Agreements** or other **mechanisms** (help to enact)
- **Ensure** business sustainability/recycling **goals** are **identified** in the MMP
- Ensure **ALL goals** are identified in the MMP
- **Partnerships**
- **Think about the future ...** help to develop the **vision**
- Look for **better ways to manage** materials
- **Share MMPC notices**
- **Share education** developed from the Planning area
- **Advocate for better practices & be a voice to help educate others**

Next Steps

Materials Management Planning Committee Meetings

Work program due 6-1-2025



Materials Management Plan Due
July 6, 2027

MMP Webpage: Michigan.gov/EGLEMMP

- [Planning Quick Guide](#)
- [Q&A](#)
- [Approval Process Worksheet](#)
- [Planning First Steps](#) (Gantt Chart Format)
- [2025 MMP Grant Application](#)
- [MMP Work Program Template](#)
- [Approved Budget Form \(with narrative\)](#)
- [MMP Work Program Submittal Survey](#)



- [MMP Toolbox](#)
 - Example Agreements
 - HCA
 - ILA (Recycling & Multicounty)
 - Example Ordinances
 - Hauler
 - Recycling/Solid Waste
 - Web Resources
 - MAR
 - MRC – MMP
 - EPA (Waste Stream Tool)
 - Make the Case for Recycling (tool)
 - MMPC Bylaws
 - Recycling Guides
 - Worksheets & Info Pages
 - Recycling Cheat Sheet
 - Funding Options

CONTACT YOUR PLANNING SPECIALIST



Christina Miller
Materials Management Planning Specialist
EGLE



Amy Karana
Materials Management Analyst
EGLE



MATERIALS MANAGEMENT PLANNING PROGRAM



MATERIALS MANAGEMENT PLANNING STAFF



Christina Miller
EGLE-MMP@Michigan.gov | 517-614-7426



Amy Karana
EGLE-MMP@Michigan.gov | 517-242-8324

To contact your **County or Regional Designated Planning Agency** and to see more information on materials management planning (MMP), MMP grants, and other resources, visit Michigan.gov/EGLEMMP.

EGLE Recycling Program Goals

Increase **Access** to and **Participation** in recycling opportunities

Inform residents and businesses on **How, Where, and Why to Recycle**

Take an **Equitable & Inclusive** approach to expanding recycling in diverse communities.

Train the recycling professionals of tomorrow

Improve the **Quality** of recycled materials

Grow **Markets** for recycled materials

Expand **Infrastructure** to grow recycling capacity

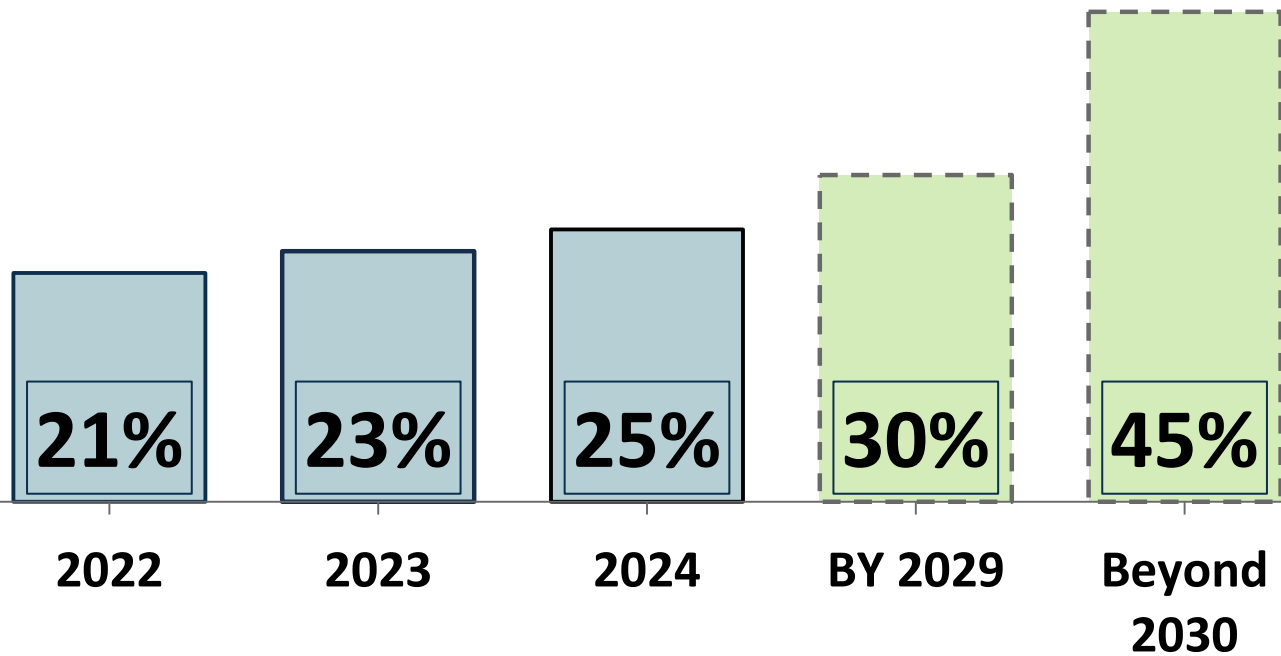
Form **Partnerships** to finance recycling activities

Grow Michigan's **Recycle Rate to 45%**

Recycling as a Climate Solution to Decarbonization

STATE OF MICHIGAN GOALS

Recycling Rate



Food Waste Reduction

50% total reduction
of food loss and waste

Based on a 2021 baseline

Why is this Important?

- ✓ Shift the focus from landfill capacity to diversion of materials from landfill disposal.
- ✓ Recyclables are not a waste material – they are a feedstock to manufacturing new products.
- ✓ There is a supply gap for recyclable materials.
- ✓ Recycling is a scalable, cost-effective climate solution.

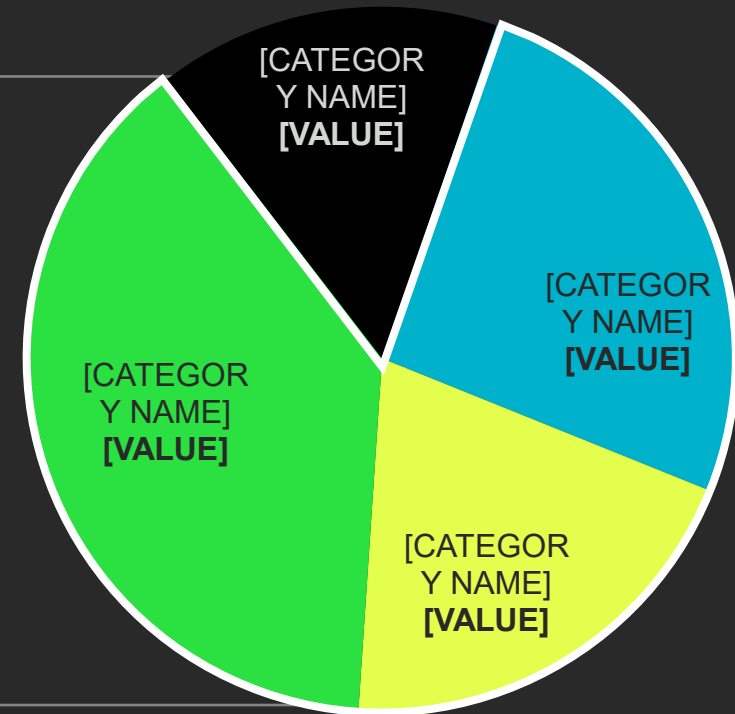


MICHIGAN MUNICIPAL SOLID WASTE COMPOSITION

MIXED RECYCLABLES - paper, glass and plastic bottles and jars, plastic tubs and containers, and metal cans

OTHER RECYCLABLES - textiles, appliances, scrap metal, electronics, bulky plastics, and plastics films

ORGANICS & COMPOSTABLES - yard and food waste as well as compostable paper and compostable food service packaging



MICHIGAN'S RECYCLING PATH **FORWARD**

6.8M

tons of
opportunity
being wasted

2.7M

2.7M more
tons targeted
to reach 45%
goal

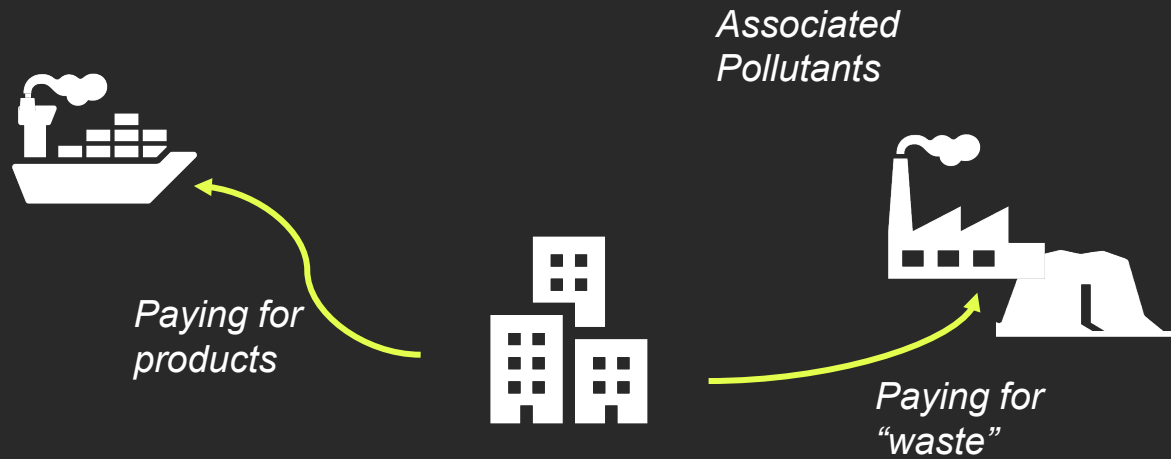
\$9B

potential
total annual
labor
income

\$33B

potential
economic
output

KEEPING VALUE IN COMMUNITIES



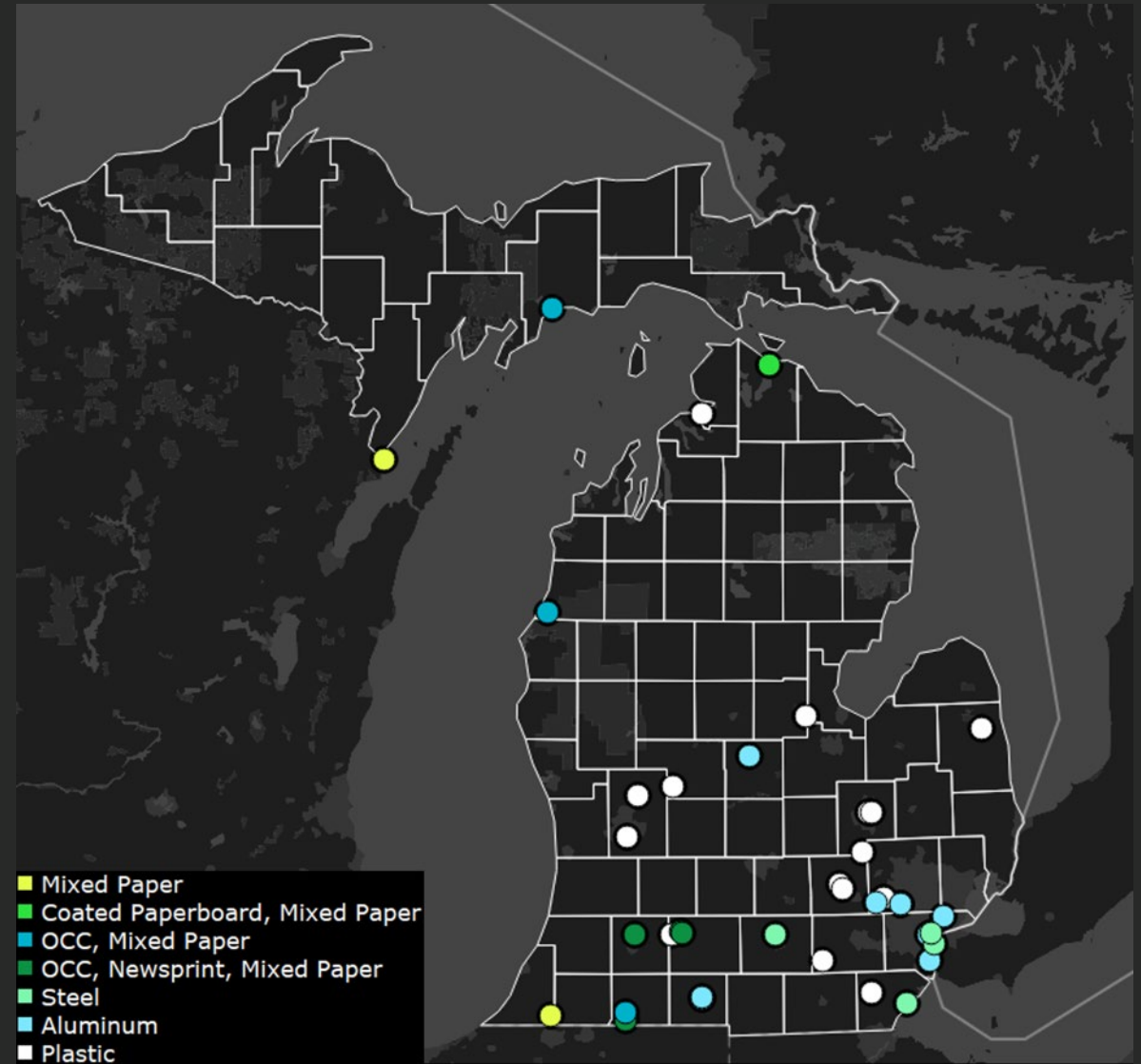
Value leaving communities



Value building communities

MICHIGAN END MARKETS

*Michigan does not have
any glass cullet plants or
aluminum UBC plants*



Data Source: RRS Database

Refer to interactive map: <https://www.nextcyclemichigan.com/end-markets-base-map>

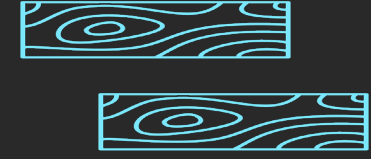
END MARKETS

Building end
market demand
is key to
reaching **45%**
recovery.

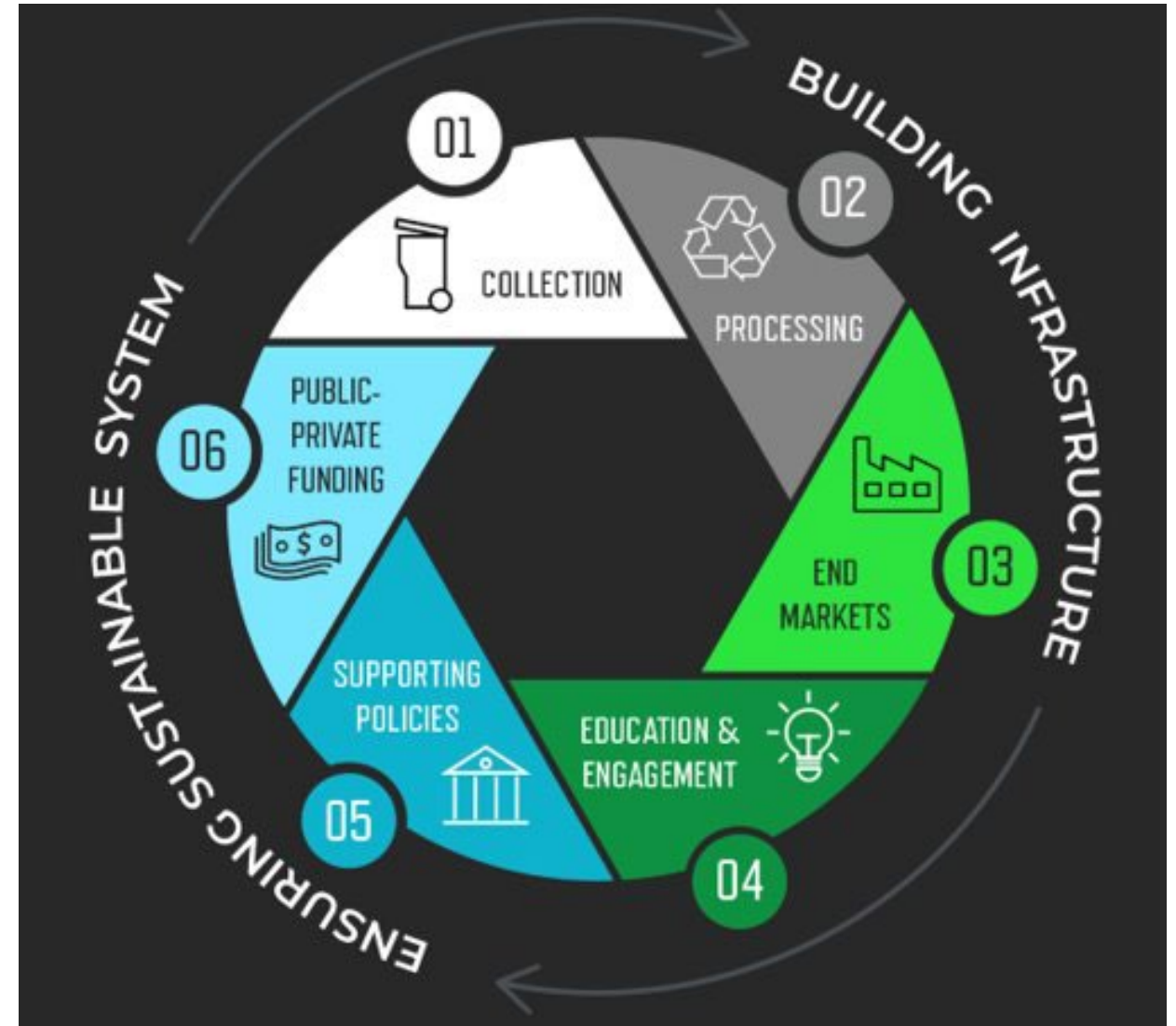
FEEDSTOCK



NEW PRODUCT



BEST PRACTICES FOR IMPLEMENTING RECYCLING



MECHANISMS

Types:

- Ordinances
- Agreements
- Contracts
- Voter Approved Millage
- Public Acts

Focus Areas:

- Funding
- Flow control
- Hauler-licensing
- Reporting
- Enforcement



PUBLIC Sector Funding Mechanism





THE MICHIGAN MATERIALS MARKETPLACE

Rheaply

EGLE

MICHIGAN DEPARTMENT OF
ENVIRONMENT, GREAT LAKES, AND ENERGY



NEXTCYCLE
MICHIGAN

The Marketplace is an online platform designed to enable reuse and nimble exchange of materials between businesses.

- Post materials you are trying to get rid of
- Source materials you can utilize
- Engage with the growing network

Roundtable Discussion May. 21

REGISTER TODAY



NEXTCYCLE
MICHIGAN

BUILDING A
CIRCULAR ECONOMY

NEXTCYCLEMICHIGAN.COM
NEXTCYCLEMI@RECYCLE.COM

EGL



ACCELERATOR
PLATFORM

**171 Teams and
Projects** since launch
in 2020

Nearly \$200k
in showcase awards.
\$860k in Harvest and
MICROS grants.



PARTNERSHIP
NETWORK

138 Partners
engaged in the
Network and growing.

**\$692M tracked
investment** for
circular economy
solutions



DATA GUIDING
OPPORTUNITIES

**2019, 2021 and 2023
Gap Analysis
Updates** evaluating
the state of recycling
in Michigan and
opportunities for
solutions.

PROJECT TYPES

Providing strategic, business, and technical support for projects across multiple topic areas driven by Michigan's circular economy gaps.



FOOD SCRAPS AND ORGANICS



PUBLIC SECTOR SOLUTIONS



RECYCLING INNOVATION & TECHNOLOGY



RECYCLING SUPPLY CHAINS

And other targeted topics!

EGLE/Recycling Unit

TECHNICAL ASSISTANCE



Program
implementation,
expansion, support



Best practices in
program
implementation



Policy and funding
mechanisms



Material quality and
contamination



Education, outreach,
and communication



Informational
presentations

EGLE/Recycling Unit Initiatives



Education



Outreach



Grant Funding



Grant
Management

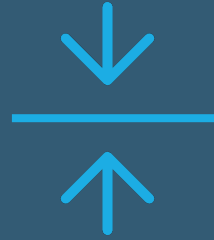


Calculate State's
Recycling Rate

What does **success** look like?



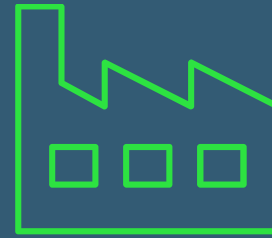
Impact to
Communities



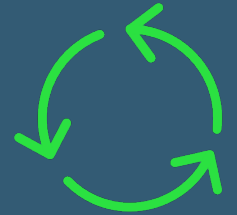
Filling
the Gaps



Attracting
Investment &
Talent

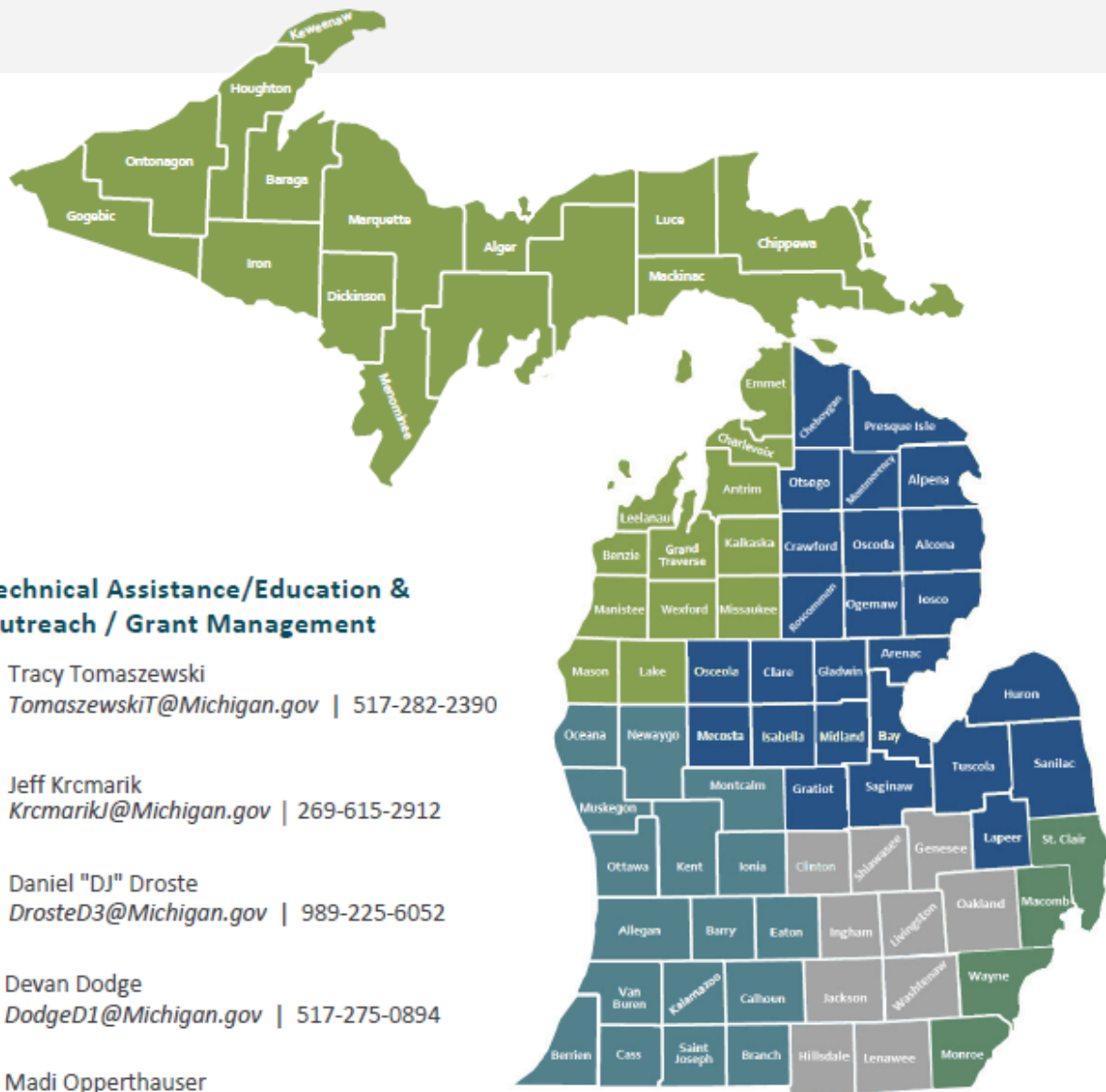


Increased
Access,
Infrastructure &
End Markets



A Growing &
Robust
Circular
Economy in
Michigan

EGLE RECYCLING PROGRAM



Technical Assistance/Education & Outreach / Grant Management

Tracy Tomaszewski
TomaszewskiT@Michigan.gov | 517-282-2390

Jeff Krcmarik
KrcmarikJ@Michigan.gov | 269-615-2912

Daniel "DJ" Droste
DrosteD3@Michigan.gov | 989-225-6052

Devan Dodge
DodgeD1@Michigan.gov | 517-275-0894

Madi Oppershauser
OppershauserM@Michigan.gov | 586-230-5273



RECYCLING PROGRAM STAFF CONTACTS

Compost Aaron Hiday HidayA@Michigan.gov | 517-282-7546

E-Waste Steve Noble NobleS@Michigan.gov | 517-446-6153

Food Waste Aubree Carlisle CarlisleA3@Michigan.gov | 517-582-1764

Market Development Matt Flechter FlechterM@Michigan.gov | 517-614-7353