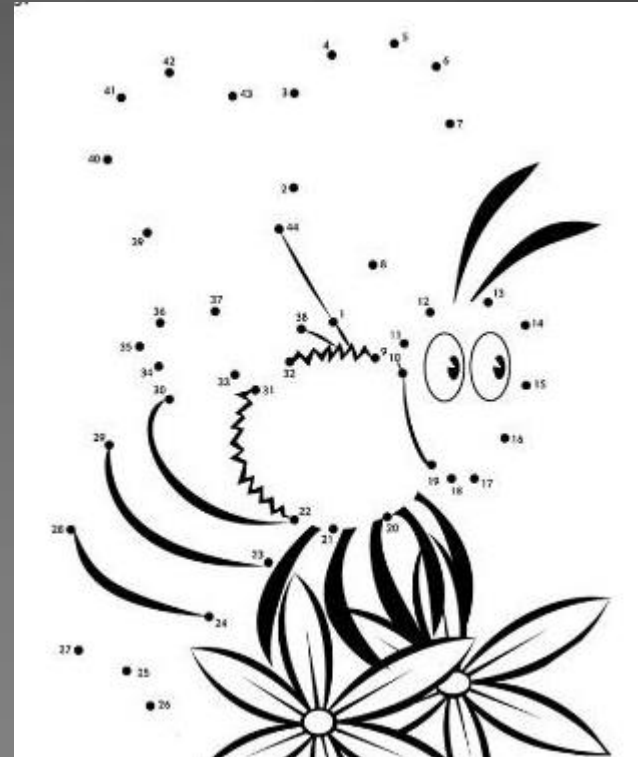




## Placemaking and Networks in the Capital Region

# CONNECT THE DOTS

- ▶ “Connect the dots” are children’s puzzles containing a sequence of numbered dots. When a line is drawn connecting the dots the outline of an object is revealed.



# CONNECT THE DOTS

- ▶ In adult discourse the phrase "connect the dots" is often used as a metaphor to illustrate an ability to associate one idea with another, to find the "big picture", to create a powerful network that is vital to achieving a larger goal.



# “THE WHOLE IS GREATER THAN THE SUM OF ITS PARTS”

**COLLABORATE:** to work with another person or group in order to achieve or do something; to cooperate with an agency with which one is not immediately connected.

## DON'T JUST TALK TO THE “CHOIR”

**COLLECTIVE IMPACT:** When many organizations work together, sharing resources and learning from one another, they can solve complex problems more effectively and efficiently than one nonprofit working in isolation.

# ARTS COUNCIL OF GREATER LANSING

Founded in 1965, we exist to support, strengthen and promote arts, culture and creativity in the capital region.

We do this through:

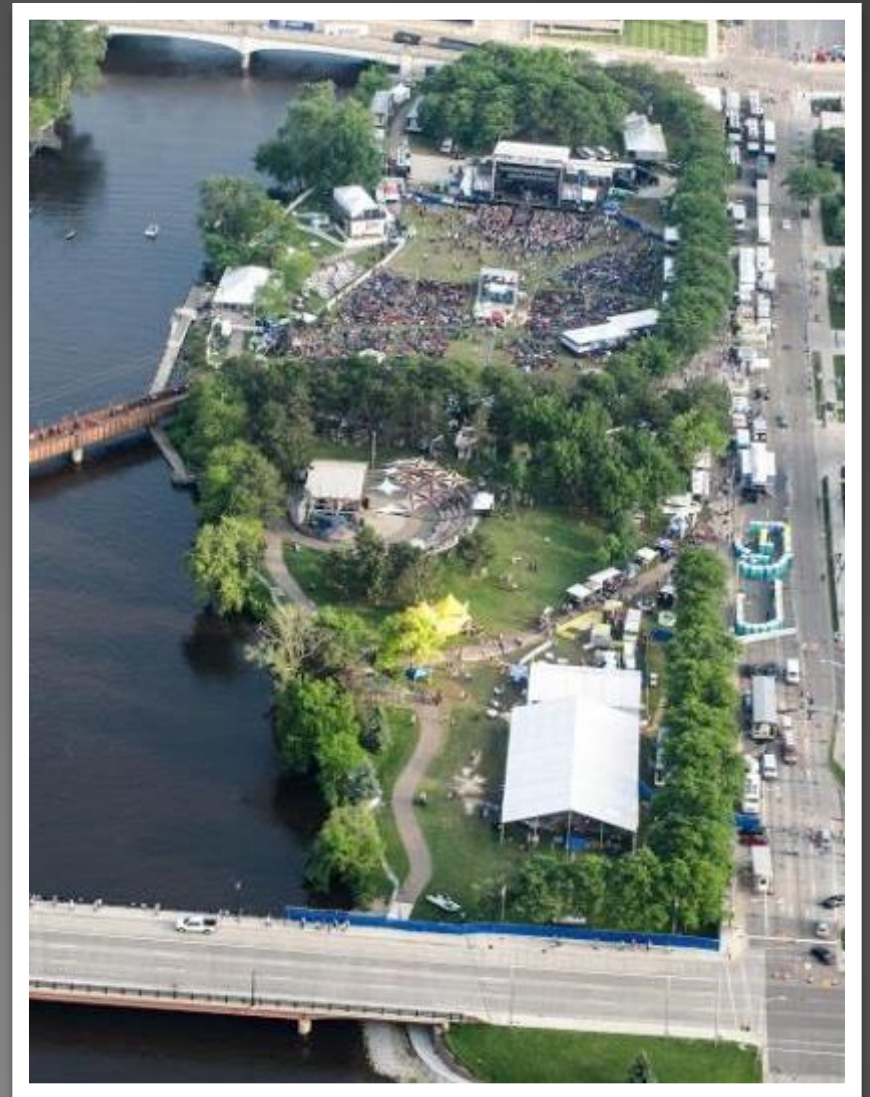
- ▶ Education & Capacity Building
- ▶ Celebration and Funding Opportunities
- ▶ Promotion and Advocacy
- ▶ Collaboration



# COLLABORATION

In Lansing, the Arts Council serves as the vital link to connect the arts with all other sectors

- Municipal Leaders
- Business Leaders
- Developers
- Merchants/Retailers
- Other Nonprofits
- Economic & Community Development Leaders
- College and University Leaders



# ROBUST STRATEGIC PLAN

The Arts Council of Greater Lansing will form partnerships and collaborative relationships that position arts and culture as integral to developing creative communities.

- ▶ Implement and convene partners around CED Plan
- ▶ Promote increased tourism and economic development
- ▶ Promote the creation of Percent for Art programs at local level
- ▶ Involve local developers in creating space for artists
- ▶ Coordination/facilitation of Art Walk/Lansing Made
- ▶ **Become THE ambassador for placemaking**

# PLACEMAKING

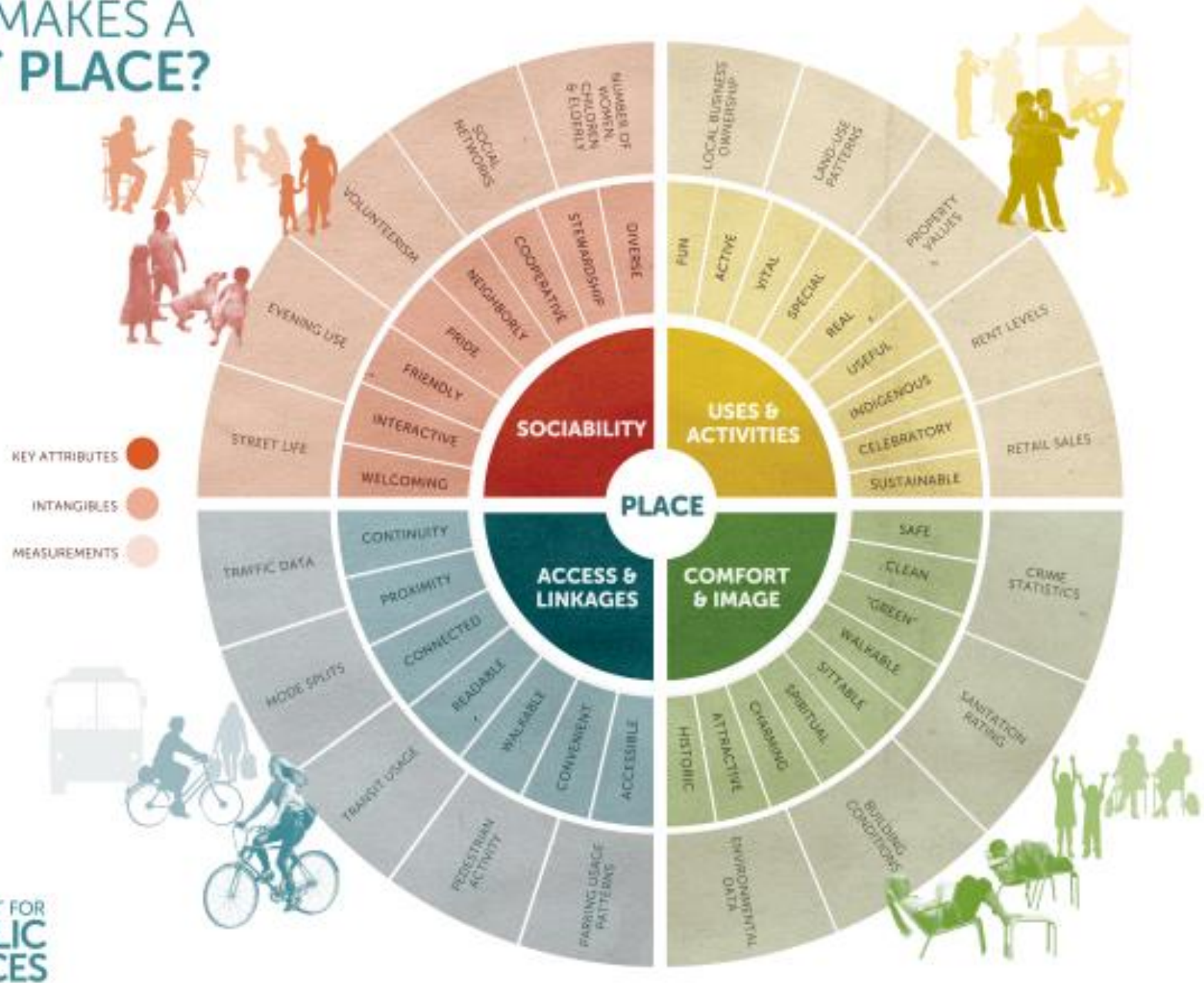
## (FINALLY...A SHARED VOCABULARY)

Placemaking is a multi-faceted approach to the planning, design and management of public spaces. Placemaking capitalizes on a local community's assets, inspiration, and potential, with the intention of creating public spaces that promote people's health, happiness, and well being.

Placemaking facilitates creative patterns of use, paying particular attention to the physical, cultural, and social identities that define a place and support its ongoing evolution.



# WHAT MAKES A GREAT PLACE?



The Place Diagram is one of the tools PPS has developed to help communities evaluate places. The inner ring represents a place's key attributes, the middle ring its intangible qualities, and the outer ring its measurable data.

# HOW IS THE ARTS COUNCIL CONNECTING THE DOTS

- Cultural Economic Development Plan
- Greater Lansing Festival Alliance
- 517ARTsearch - Mobile App
- ARTS Night Out
- #Under the Bridge
- Sense of Place - Arts Impact Program
- 517 Creative Spaces
- Creative Placemaking Summit

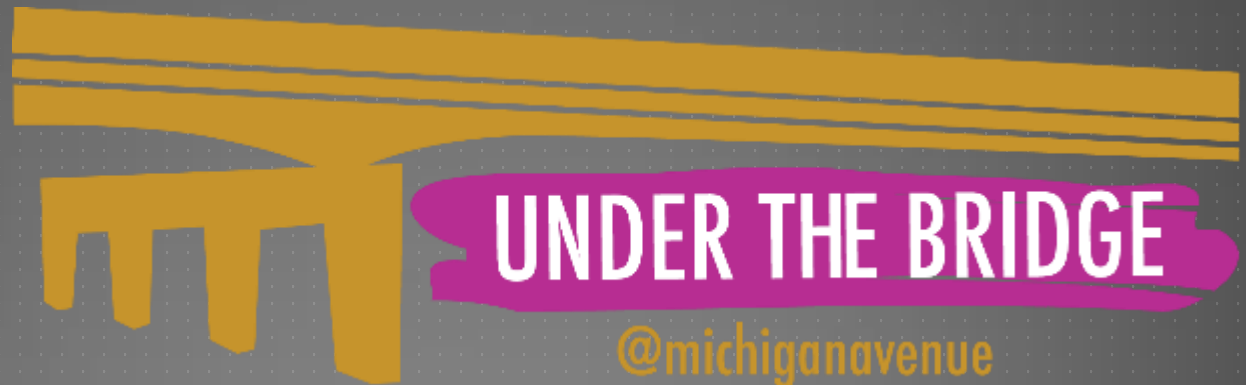


517ARTsearch



ARTS

NIGHT OUT



UNDER THE BRIDGE

@michiganavenue

517CREATIVESPACES

The Arts Council of Greater Lansing's



# Creative Placemaking Summit

Presented by the Greater Lansing Regional Prosperity Initiative

Creative Placemaking will be the driving force of community revitalization in the 21st century. It promises more adaptive ways of seeing, understanding, experiencing and transforming where we live, how we work, what we dream.

“CONNECT THE DOTS”

# ACTIVATING SPACE THROUGH THE ARTS

## “ACT TOGETHER”

A video created for the Arts Council of Greater Lansing's  
Creative Placemaking Summit 2015 by Simon Dong Ha Lee

# THANK YOU!

**Deborah E. Mikula, Executive Director**

Arts Council of Greater Lansing  
1208 Turner  
Lansing, MI 48906

PHONE: 517-372-4636

WEBSITE: [lansingarts.org](http://lansingarts.org)

EMAIL: [debbie@lansingarts.org](mailto:debbie@lansingarts.org)

