

State Park

Road Network

Vehicle Traffic Volume* (Vehicles per day)

- Low (Under 2,500)
- Medium (2,500 to 10,000)
- Heavy (Above 10,000)
- Minor Roads (No Data)
- Limited Access Roads
- Rail Lines

Trails

- Unpaved Multi-Use Trail
- Paved Multi-Use Trail
- North Country Trail
- Temporary Connectors
- Proposed Non-Motorized Routes

Recreational Facilities & Amenities

- Park/Public Recreation Area
- Camping
- Picnic Facilities
- Drinking Water
- Restrooms/Port-A-Johns
- Swimming
- Showers
- Hiking/Trailhead
- Biking
- Nordic Skiing

Points of Interest

- Hospitals
- Summits
- Other Points of Interest
- Places

Services

PLACE NAME

Full Service (food, restrooms, and lodging)

Place Name

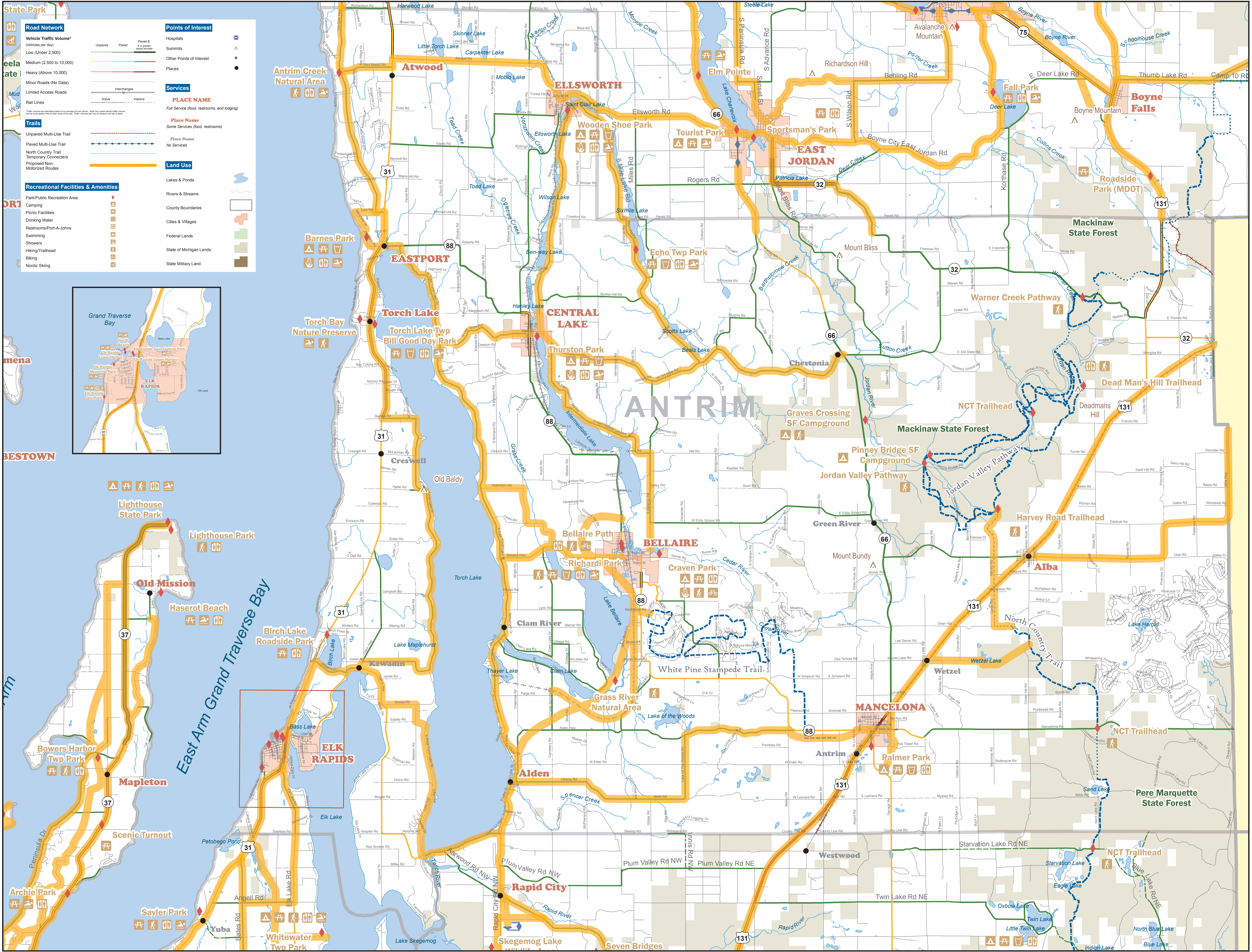
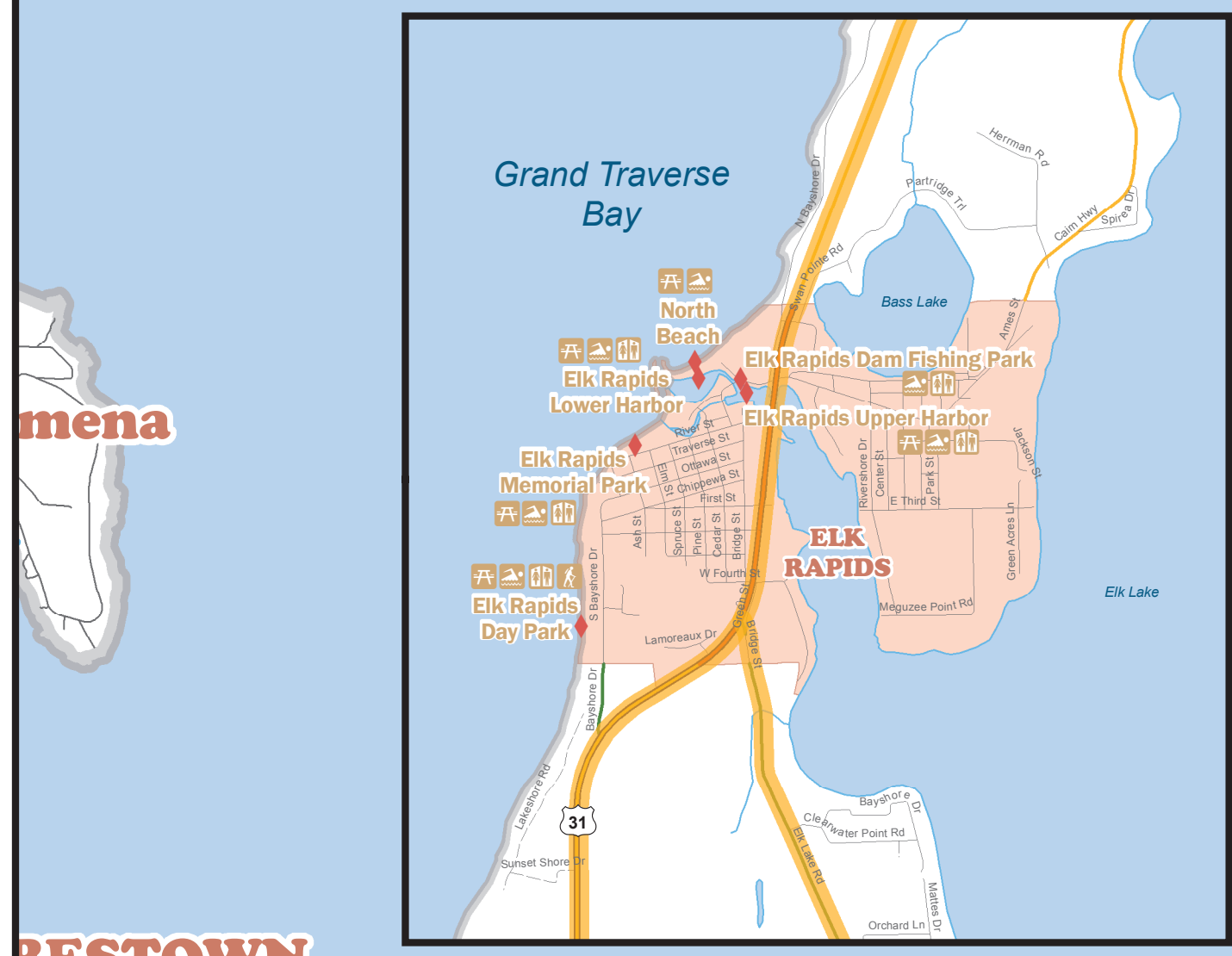
Some Services (food, restrooms)

Place Name

No Services

Land Use

- Lakes & Ponds
- Rivers & Streams
- County Boundaries
- Cities & Villages
- Federal Lands
- State of Michigan Lands
- State Military Land



BESTOWN

ARM

Yuba