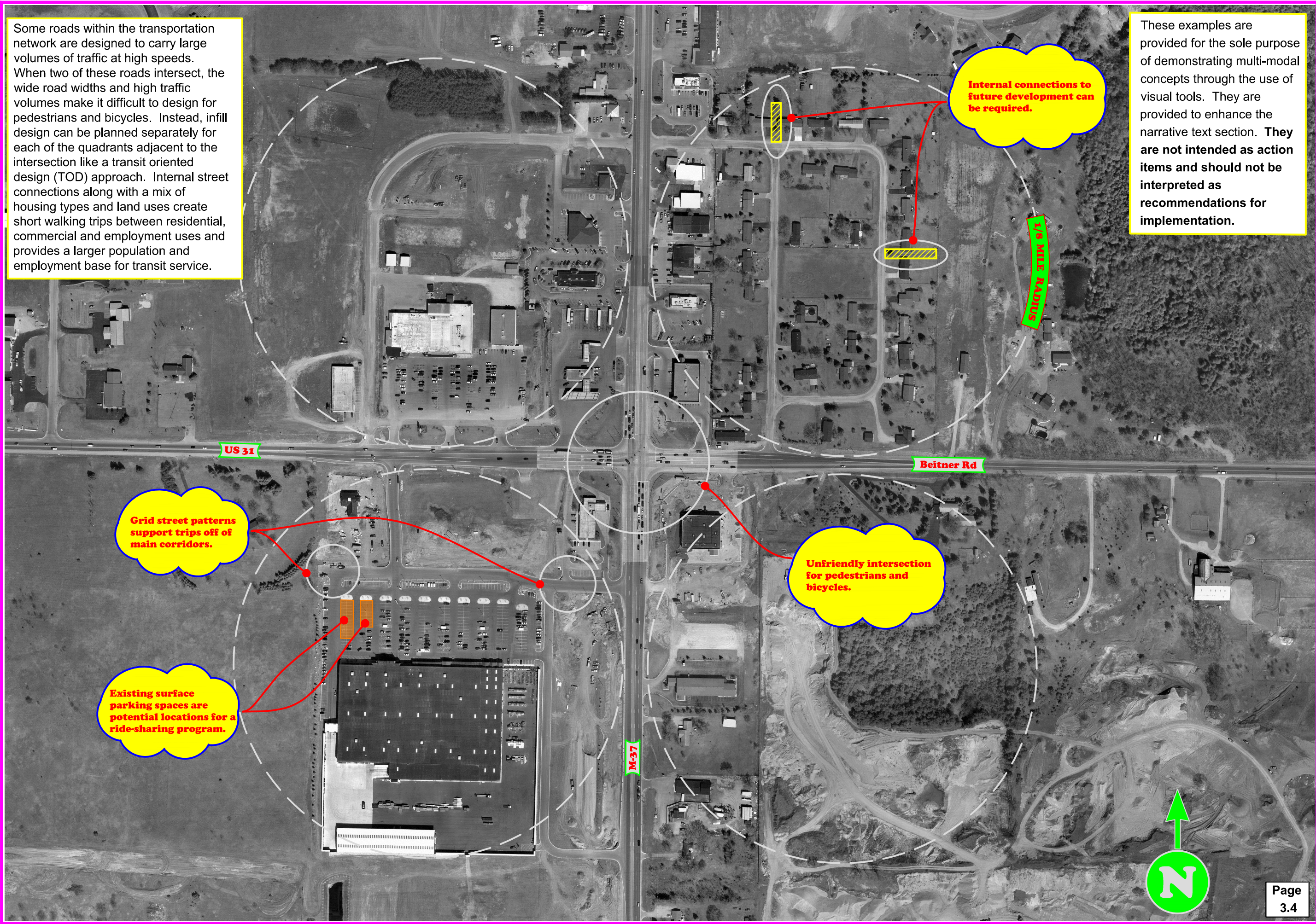


Some roads within the transportation network are designed to carry large volumes of traffic at high speeds. When two of these roads intersect, the wide road widths and high traffic volumes make it difficult to design for pedestrians and bicycles. Instead, infill design can be planned separately for each of the quadrants adjacent to the intersection like a transit oriented design (TOD) approach. Internal street connections along with a mix of housing types and land uses create short walking trips between residential, commercial and employment uses and provides a larger population and employment base for transit service.

These examples are provided for the sole purpose of demonstrating multi-modal concepts through the use of visual tools. They are provided to enhance the narrative text section. **They are not intended as action items and should not be interpreted as recommendations for implementation.**



**CORRIDOR 3 DETAIL 1
CHUMS CORNERS EXAMPLE**