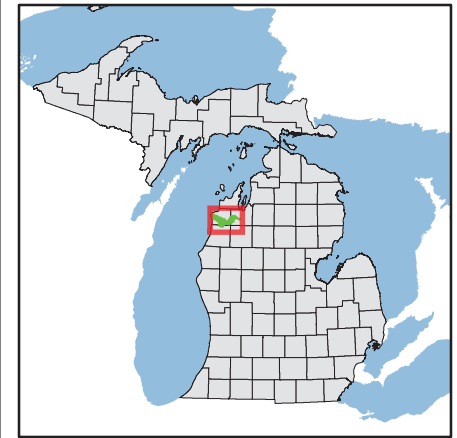


LOCATOR MAP



KEY | RECREATION SITES

- Marinas
- Boat Launch Ramps
- State Campgrounds
- Commercial Campgrounds
- MDNR Access Sites
- State Owned Unimproved Access Sites (not included in inventories)

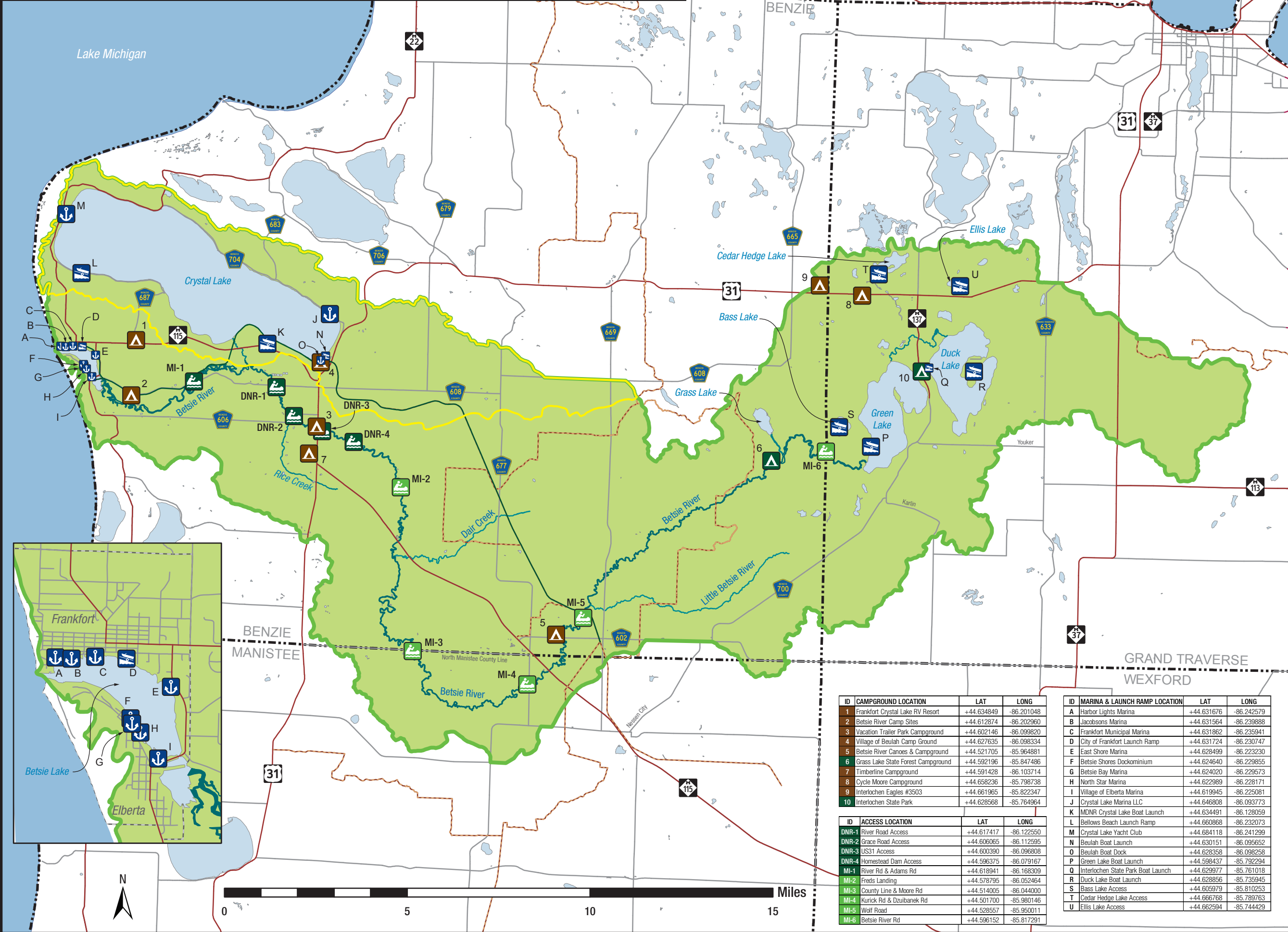
- Betsie Valley Trailway
- MDNR Snowmobile Trail

FEATURES

- Betsie River Watershed
- Crystal Lake Watershed
- Lake Michigan
- Lakes and Water Bodies
- Rivers
- Major Tributaries
- MDOT Roads
- Local Roads

Source | Ground Survey & DNR Geodata

Scale | 1:160,000 Date | 3/10/2016



ID	CAMPGROUND LOCATION	LAT	LONG
1	Frankfort Crystal Lake RV Resort	+44.634849	-86.201048
2	Betsie River Camp Sites	+44.612874	-86.202960
3	Vacation Trailer Park Campground	+44.602146	-86.099820
4	Village of Beulah Camp Ground	+44.627635	-86.098334
5	Betsie River Canoes & Campground	+44.521705	-85.964881
6	Grass Lake State Forest Campground	+44.592196	-85.847486
7	Timberline Campground	+44.591428	-86.103714
8	Cycle Moore Campground	+44.658236	-85.798738
9	Interlochen Eagles #3503	+44.661965	-85.822347
10	Interlochen State Park	+44.628568	-85.764964

ID	ACCESS LOCATION	LAT	LONG
DNR-1	River Road Access	+44.617417	-86.122550
DNR-2	Grace Road Access	+44.606065	-86.112595
DNR-3	US31 Access	+44.600390	-86.096808
DNR-4	Homestead Dam Access	+44.596375	-86.079167
MI-1	River Rd & Adams Rd	+44.618941	-86.168309
MI-2	Freds Landing	+44.578795	-86.052464
MI-3	County Line & Moore Rd	+44.514005	-86.044000
MI-4	Kurick Rd & Dzulbanek Rd	+44.501700	-85.980146
MI-5	Wolf Road	+44.528557	-85.960011
MI-6	Betsie River Rd	+44.596152	-85.817291

ID	MARINA & LAUNCH RAMP LOCATION	LAT	LONG
A	Harbor Lights Marina	+44.631676	-86.242579
B	Jacobsons Marina	+44.631564	-86.239888
C	Frankfort Municipal Marina	+44.631862	-86.235941
D	City of Frankfort Launch Ramp	+44.631724	-86.230747
E	East Shore Marina	+44.628499	-86.223230
F	Betsie Shores Dockominium	+44.624640	-86.229855
G	Betsie Bay Marina	+44.624020	-86.229573
H	North Star Marina	+44.622989	-86.228171
I	Village of Elberta Marina	+44.619945	-86.225081
J	Crystal Lake Marina LLC	+44.646808	-86.093773
K	MDNR Crystal Lake Boat Launch	+44.634491	-86.128059
L	Bellows Beach Launch Ramp	+44.660868	-86.232073
M	Crystal Lake Yacht Club	+44.684118	-86.241299
N	Beulah Boat Launch	+44.630151	-86.095652
O	Beulah Boat Dock	+44.628358	-86.098258
P	Green Lake Boat Launch	+44.598437	-85.792294
Q	Interlochen State Park Boat Launch	+44.629977	-85.761018
R	Duck Lake Boat Launch	+44.628856	-85.735945
S	Bass Lake Access	+44.605979	-85.810253
T	Cedar Hedge Lake Access	+44.666768	-85.789763
U	Ellis Lake Access	+44.662594	-85.744429

