

Traverse City Capital Improvements

2015-17



Powerpoint Courtesy of
Traverse City Planning
Department

Barlow Street



Station Street



Santo Street



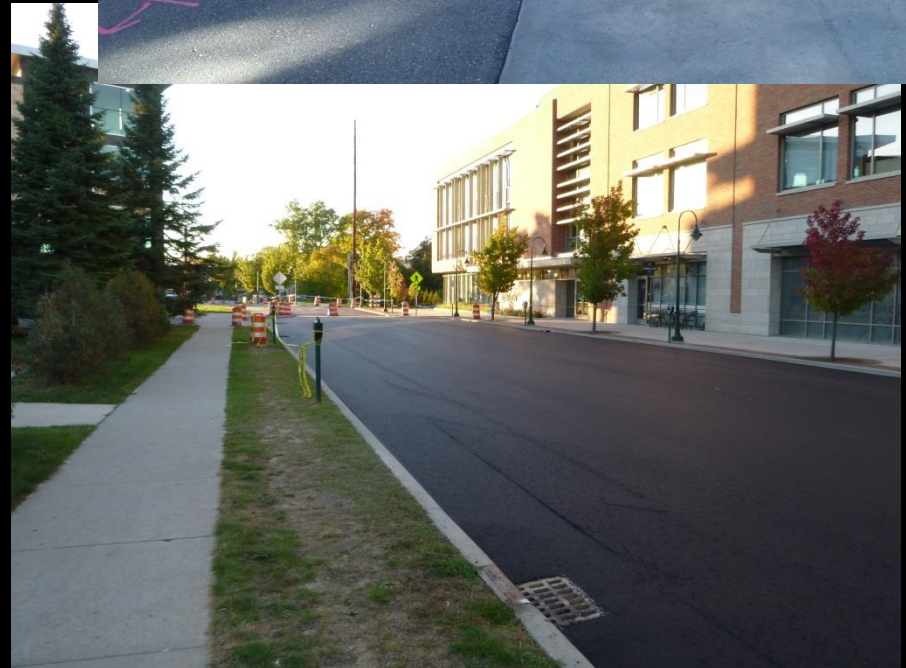
Plainview



Union Street



Lake Street



Birchwood



Gillis Street



Parking Lot V



West Front

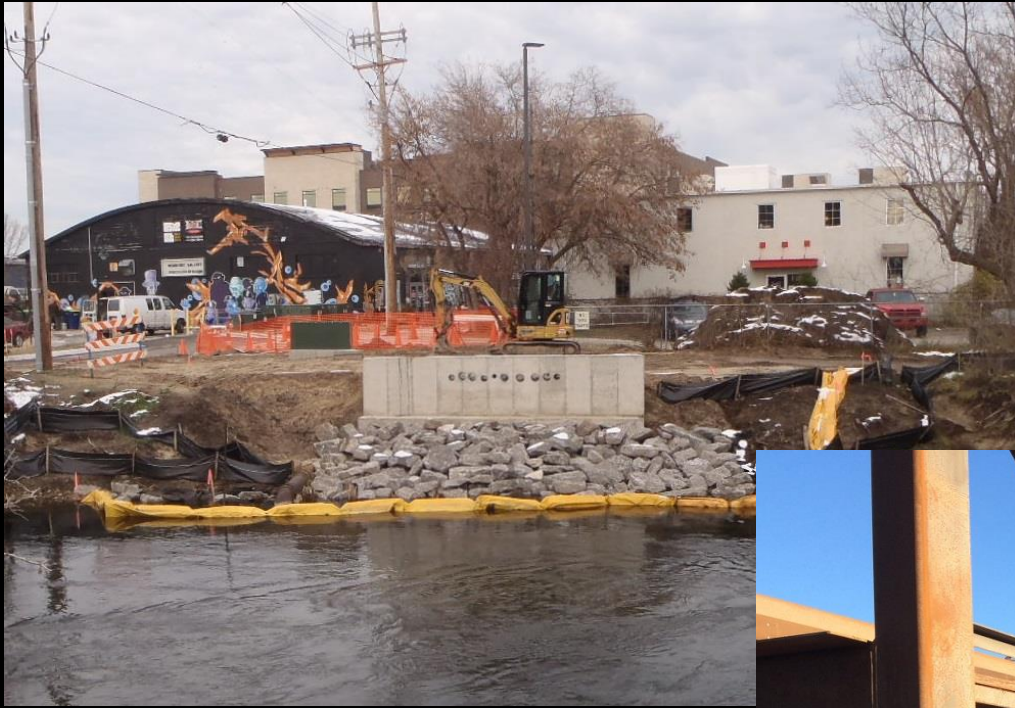


921 West Front Street (Pine to Division)

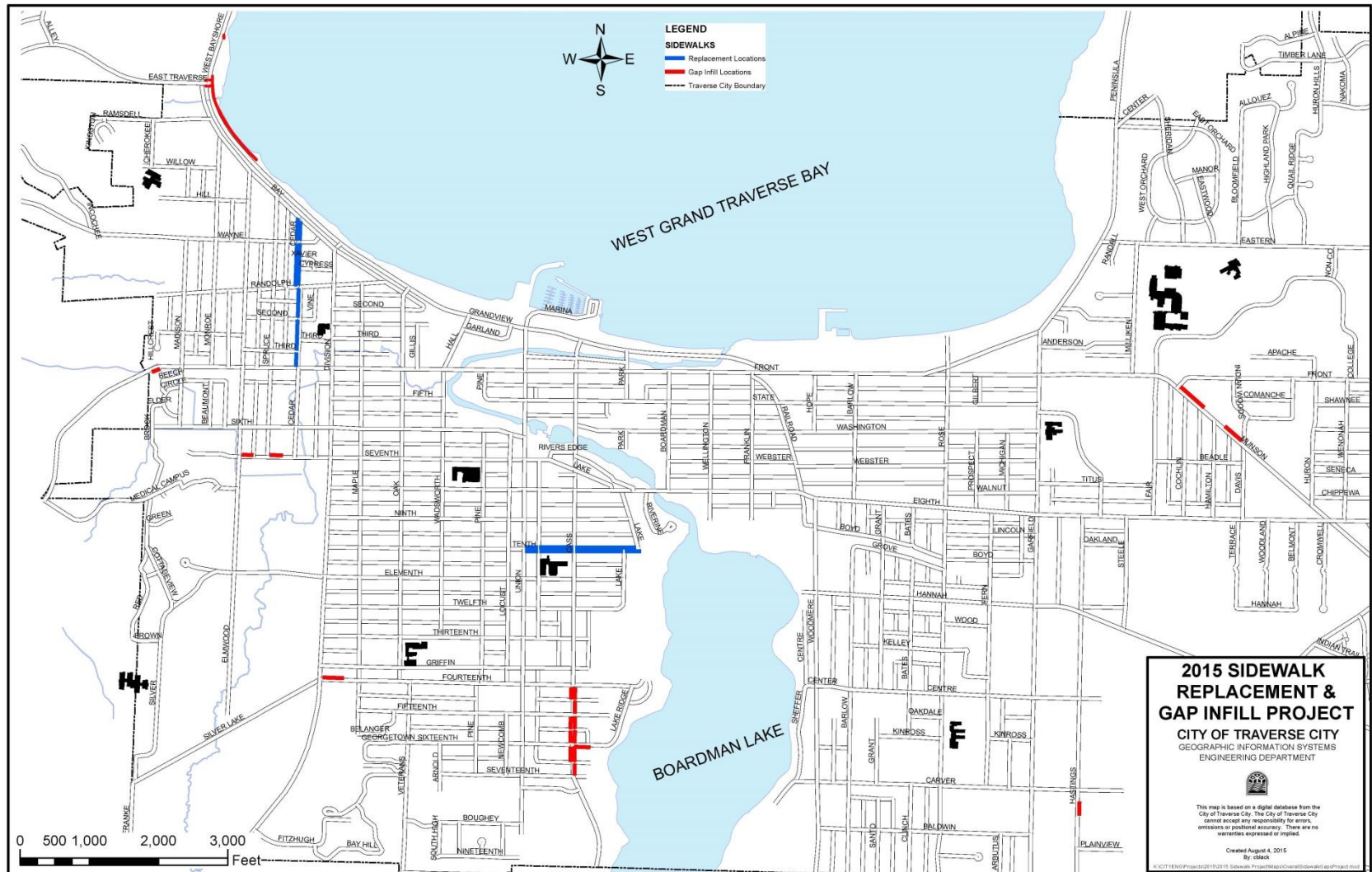


Photograph Courtesy of
Commissioner Howe

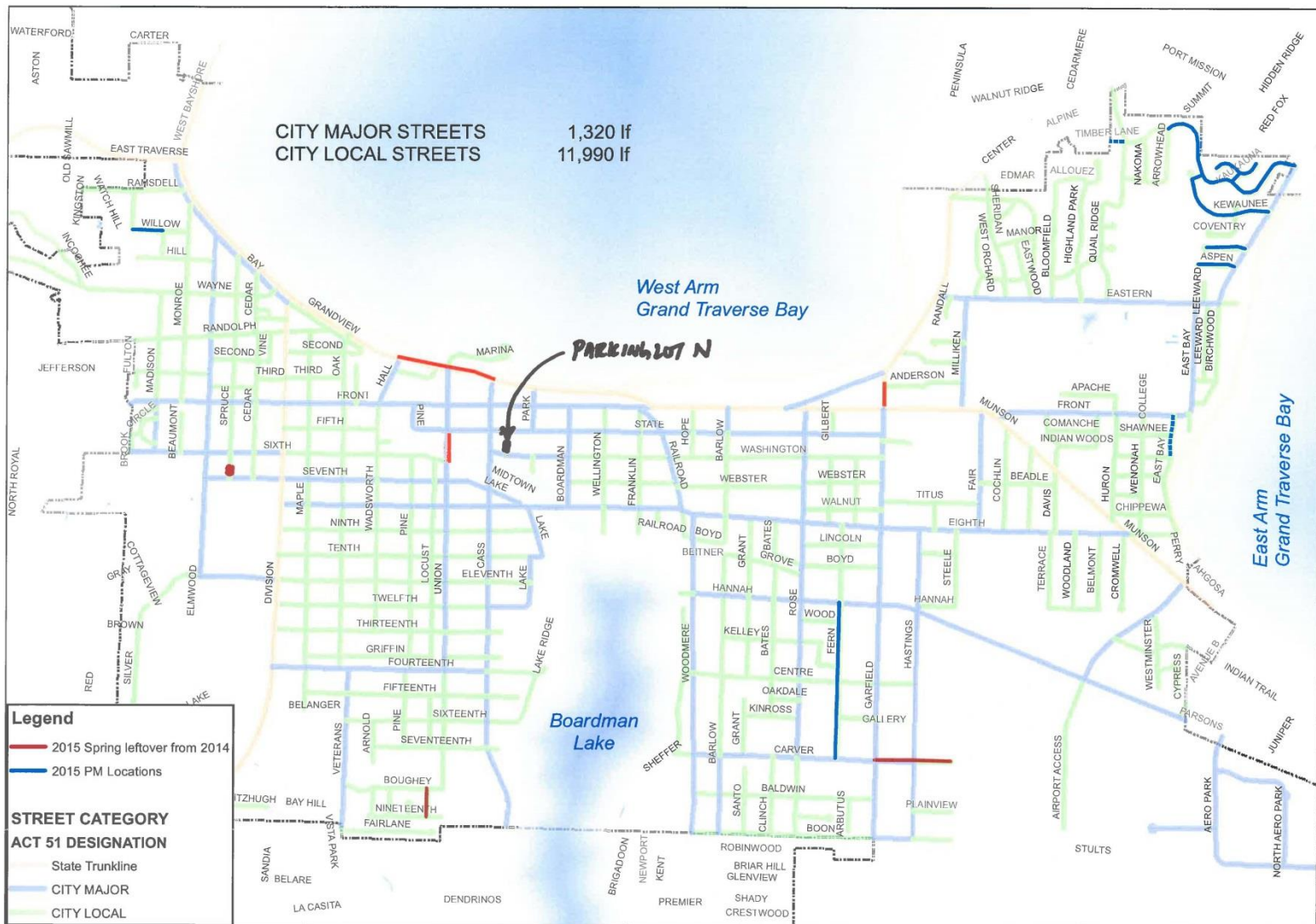
#66: Pine Street Pedestrian Way



946 Expand Sidewalk System / Infill Gaps



Pavement Preservation



Asset Management
City of Traverse City

N
W E
S

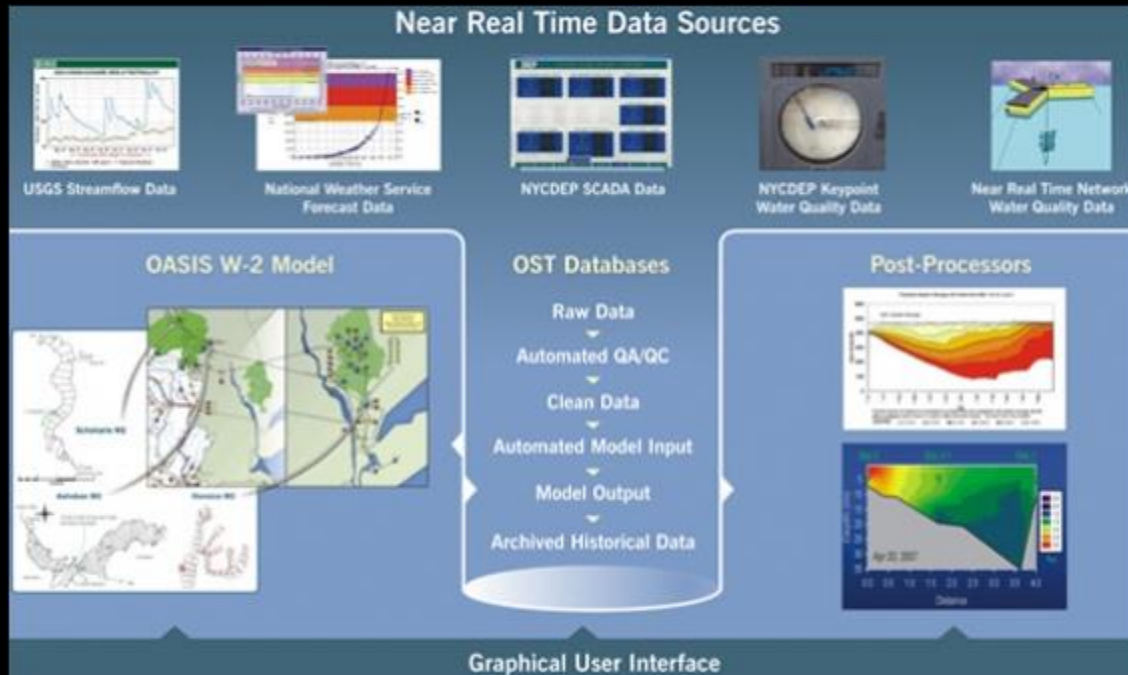
City of Traverse City
2015 Pavement
Preservation Projects

REVISIO
05-15-15
JPT

1-26-15
JPT

This map is based on digital data from the City of Traverse City. The City cannot accept any responsibility for errors, omissions, or inaccuracies. There are no warranties expressed or implied.

944 Storm Water Management Plan



Nitrogen Neutral Parking Lot

- Reduce Runoff Volume
- Groundwater Recharge
- Reduce Nitrogen Loading
- Reduction of Heat Island Effect
- Groundwater Recharge
- Reduce Lighting and Electrical Requirements
- Create a Greener Community



931 Stormwater Asset Management Plan



Stormwater

- Enhance GIS mapping of drainage system
- Determine hydraulic bottlenecks and identify critical projects
- Sewer cleaning and televising
- Investment in hardware/software to enhance Asset Management
- Evaluate stormwater quality issues and identify pollution-reducing enhancements
- Evaluate long-term infrastructure maintenance and capital needs
- Review stormwater costs and revenue options

Total Program Cost:	\$1.44 million
State Reimbursement:	\$1.18 million
Local Match:	\$263,000

943 Waste Water Asset Management Plan



Wastewater

- Enhance GIS mapping of collection system
- Sewer cleaning and televising
- Manhole inspections
- Pump station evaluation
- Collection system evaluation and prioritization to identify maintenance and rehabilitation needs
- Flow metering and wet weather modeling
- Evaluate long-term infrastructure maintenance and capital needs
- Rate Study

Total Program Cost:	\$1.00 million
State Reimbursement:	\$819,000
Local Match:	\$181,000

2015 Infrastructure Investments



Investments: The City has invested more than \$4,712,000 to resurface and reconstruct streets, repair, replace and extend sidewalks and trails, pedestrian bridges and to reconstruct parking lots since April 2015.

Projects in Design Development

State/Franklin Street Ninth Street



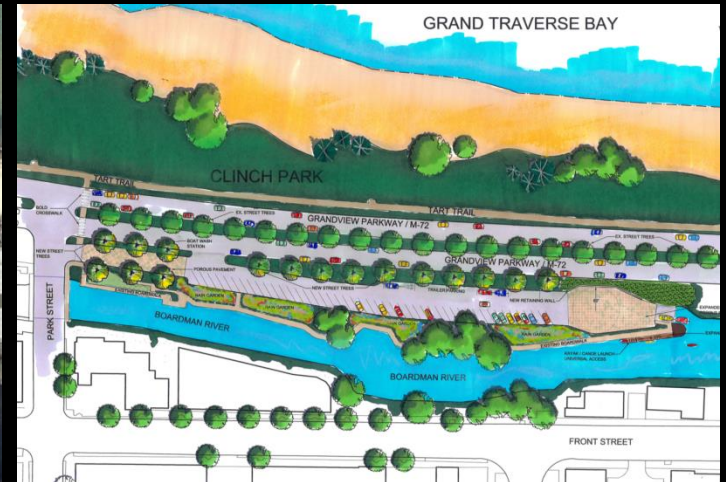
Approve by Planning
Commission 8/5/14 and 9/3/14

Lot D Reconstruction 550

Asphalt surface is aged. The lot will be reconfigured to better serve boaters using the boat launch and beachgoers.



Approve by Planning
Commission 3/18/14



535 West Front Street Bridge Replacement



Approve by Planning
Commission 3/18/14

Eighth Street Bridge Repair 58



Approve by Planning
Commission 3/4/14



100' span, 3 precast box girders
precast concrete arched fascia panels

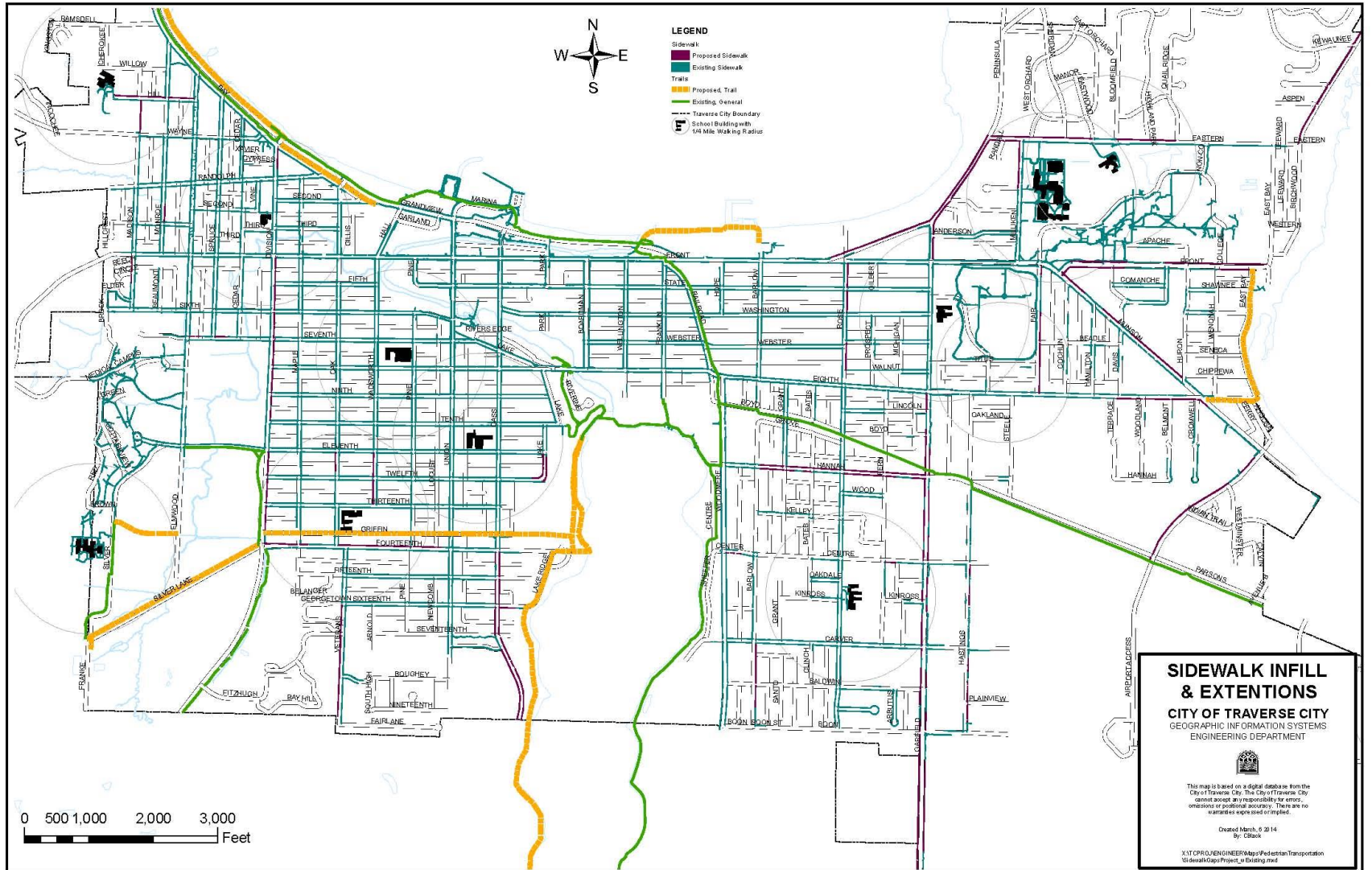
#63: Garland Street Reconstruction

Infrastructure improvement; Realign street to connect with Union Street to improve access with a street design where pedestrians and vehicles share the same space.



Approve by Planning
Commission 7/20/11

Annual Sidewalk Improvements 365



881 West Front Street (Division to Elmwood)



East Front Street Streetscape 831

New curbs, street trees, benches, bike racks and sidewalk along East Front Street between Boardman and Grandview Parkway.

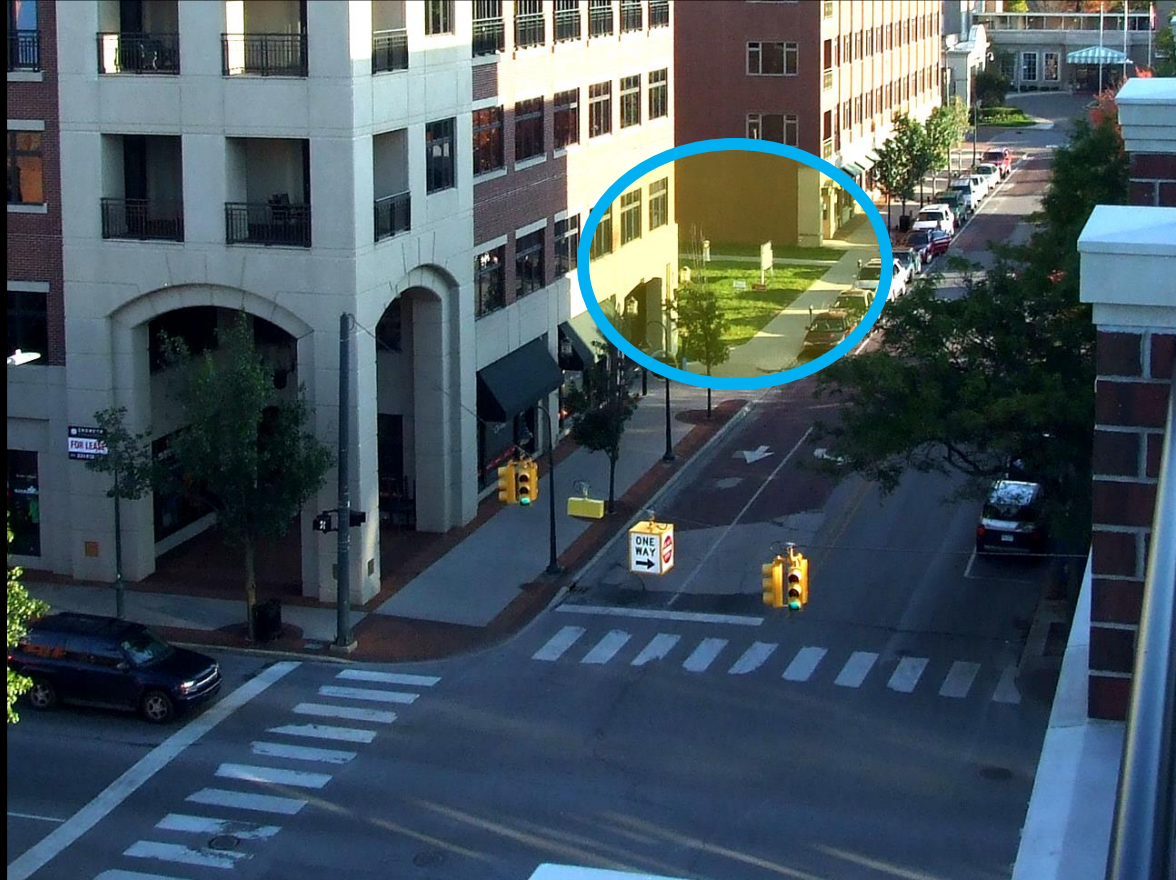


East Front Street Streetscape 831



Mid-block crosswalk includes bump-outs, brick paves and signs

878 Park Street Deck Entrance and Streetscapes



Projects in Public Involvement

Seventh Street



Eleventh Street



Questions